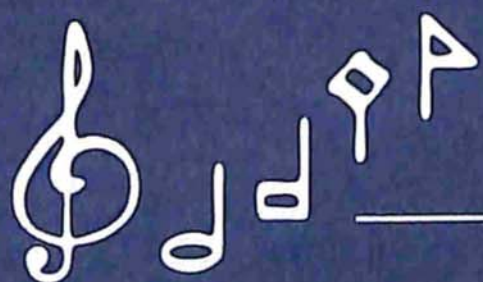


Journal  
*of*  
Research  
*in*  
Music  
Education



January 2016

---

VOLUME SIXTY THREE  
NUMBER 4



National Association  
*for* Music Education

# Contents

<b>Forum</b>	395
<b>The National School Orchestra Contests: 1929–1937</b> <i>Phillip M. Hash</i>	397
<b>Is the Grass Greener? Current and Former Music Teachers' Perceptions a Year After Moving to a Different School or Leaving the Classroom</b> <i>Carl B. Hancock</i>	421
<b>Sharing the Stage: Ethical Dimensions of Narrative Inquiry in Music Education</b> <i>Jeananne Nichols</i>	439
<b>Effects of Internal and External Focus of Attention During Novices' Instructional Preparation on Subsequent Rehearsal Behaviors</b> <i>Mark Montemayor, Brian A. Silvey, Amy L. Adams, and Kay L. Witt</i>	455
<b>Effects of a Westernized Korean Folk Music Selection on Students' Music Familiarity and Preference for Its Traditional Version</b> <i>Sangmi Kang and Hyesoo Yoo</i>	469
<b>The Influence of Video Reflection on Preservice Music Teachers' Concerns in Peer- and Field-Teaching Settings</b> <i>Sean R. Powell</i>	487
<b>Updated Call for Nominations: Update Editorial Committee</b>	508
<b>Call for Research Papers, Posters, and Graduate Projects: International Research Symposium on Talent Education</b>	509

**SUBSCRIBED**



# Contents

<b>Forum</b>	3
<i>Steven J. Morrison</i>	
<b>Analysis of Publication Decisions for <i>Journal of Research in Music Education</i> Manuscripts (2009–2014)</b>	5
<i>Wendy L. Sims, Jackie Lordo, and Cynthia Williams Phelps</i>	
<b>20 Years of the MENC Biennial Conference: A Content Analysis</b>	14
<i>Joshua Palkki, Daniel J. Albert, Stuart Chapman Hill, and Ryan D. Shaw</i>	
<b>Effects of Conductor Expressivity on Secondary School Band Members' Performance and Attitudes Toward Conducting</b>	29
<i>Brian A. Silvey and Bryan D. Koerner</i>	
<b>"The Music I Was Meant to Sing": Adolescent Choral Students' Perceptions of Culturally Responsive Pedagogy</b>	45
<i>Julia T. Shaw</i>	
<b>Bringing the Outside In: Blending Formal and Informal Through Acts of Hospitality</b>	71
<i>Chad West and Radio Cremata</i>	
<b>Music Programs in Charter and Traditional Schools: A Comparative Study of Chicago Elementary Schools</b>	88
<i>Jamey Kelley and Steven M. Demorest</i>	
<b>Singer Perceptions of Collegiate Mid-Level Choral Experiences: A Descriptive Study</b>	108
<i>Marci L. Major and Jacob M. Dakon</i>	
<b>Corrigenda</b>	128
<b>Society for Ethnomusicology 2016 Annual Meeting</b>	132

