

ISSN - 0019 - 4468, e-ISSN: 2455-7218

The Journal of the Indian Botanical Society

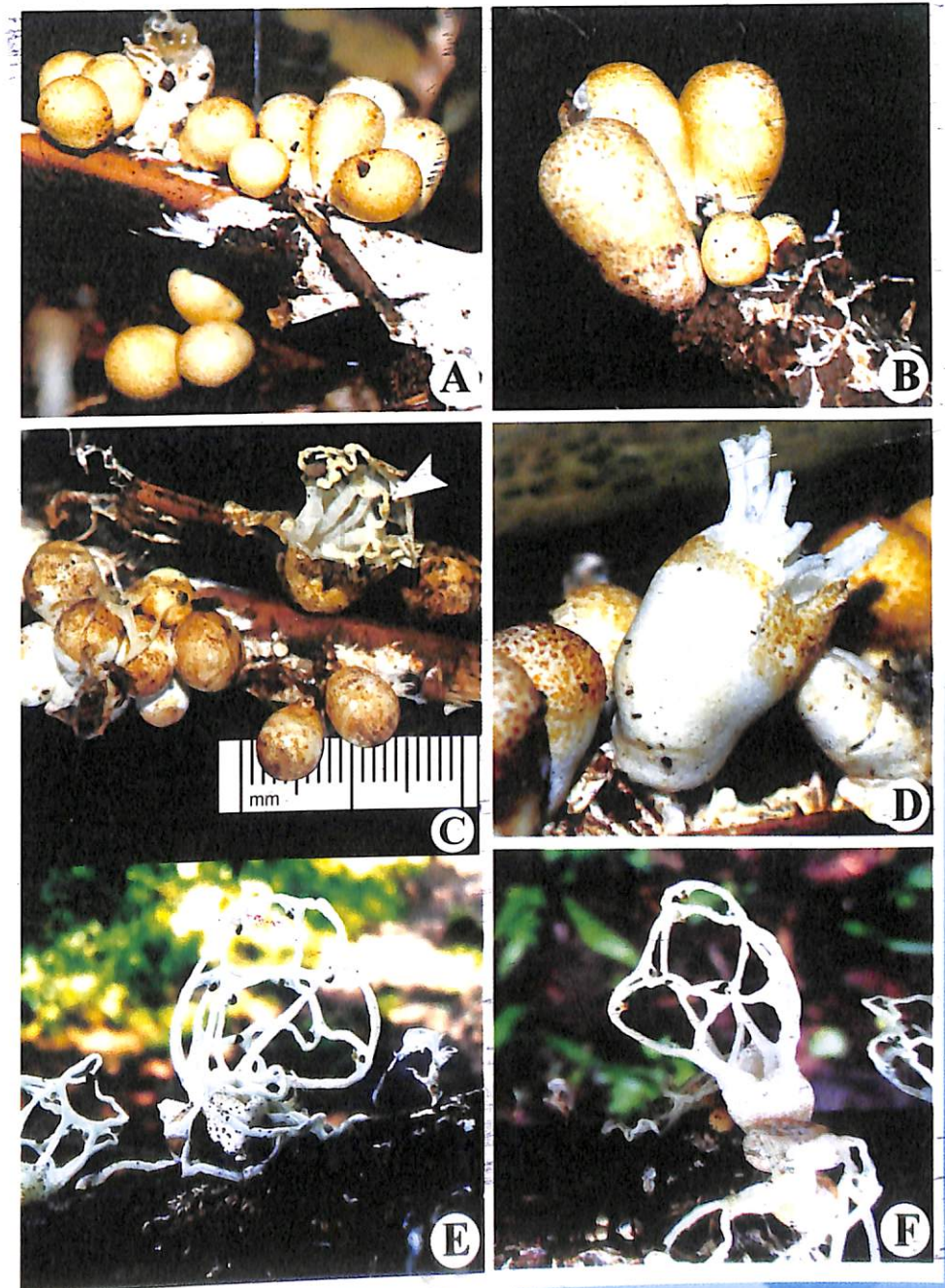
Prof. S. N. Chaturvedi Commemoration Volume

Volume 97 (1&2) 2018

GIF: 0.877
SJIF 5.744
NAAS : 3.51

Chief Editor
Y. Vimala

Associate Editors
Alka Srivastava
R.K. Sharma



CONTENTS

Taximetric study of some wild plant species with potential for pulp and paper making A. A. Abdulrahaman, D. O. Obajowo and Sofiat Oluwatobi Katibi	1-11
Anatomy and distribution of polysaccharide during anther development in <i>azadirachta indica</i> a. Juss. P. L. Talawar and S. N. Agadi	12-20
Artificial induction of polyploidy in <i>Andrographis paniculata</i> (burm. F.) Wall. Ex nees. Surochita Basu and Debasree Lodh	21-28
Cyanobacteria- some reports from various habitats of Ranchi (Jharkhand) India Chhaya Thakur and Radha Sahu	29-35
<i>In vitro</i> propagation of <i>Biophytum sensitivum</i> Linn using mature nodal explants Sirigiri Chandra Kala and Kokkanti Mallikarjuna	36-42
Biotic elicitation: A strategy for enhancement of antidiabetic gymnemic acid from <i>Gymnema sylvestre</i> Saurabha B. Zimare , Prachi S. Kakade and Nutan P. Malpathak	43-48
Influence of carbon and nitrogen sources on Territrem B production by <i>Aspergillus terreus</i> S. Kiran, M. Surekha and S. M. Reddy	49-53
New distribution record of <i>Clathrus delicatus</i> Berk. & Broome (Phallaceae) from Gujarat Ravi S. Patel, Ajit M. Vasava and Kishore S. Rajput	54-57
Identification of components from the leaf of <i>Boerhavia diffusa</i> V. R. Bindhu, S. Ganga and Sushadayanandan	58-61
Effect of methanol and dimethyl sulfoxide extracts of different parts of <i>Euphorbia hirta</i> L. on <i>Staphylococcus aureus</i> Indu Kumari	62-65
Applications of some anatomical features of <i>Sida acuta</i> , <i>Tithonia diversifolia</i> and <i>Vernonia amygdalina</i> A. A. Abdulrahaman, O. O. Abinde and A. A. Al Sahli	66-78
Potential application of natural products in prevention and treatment of oral diseases: A review Pratima Vishwakarma	79-88
Exploring active mechanism of natural biocides against microbes associated with raw and processed food Sarika Gupta and Vartika Gurdaswani	89-98
Control of root knot disease in <i>Ammi majus</i> using organic amendments Aiman Zafar, Aisha Sumbul and Irshad Mahmood	99-107
Analysis of various parameters of selected banana varieties available in kerala and suggests a variety for diabetic patients Geethu S. Nath, R. Santhoshkumar and Neethu S. Kumar	108-114
Improved protein content and quality parameters in the induced variants of <i>Vigna mungo</i> (L.) Hepper Priya Singh and R.R Singh	115-120
Forest fire in Uttarakhand-2016: An overview R. K. Dwivedi	121-125
Supportive allelopathic effect of <i>Parthenium hysterophorous</i> on <i>Azadirachta Indica</i> Komal Gupta and Y. Vimala	126-130
Water quality index of belawale khurd reservoir of Kolhapur district (MH) (India) Aparna Patil , Sachin Patil and Sanjay Sathe	131-135

SUBSCRIBED



ISSN - 0019 - 4468, e-ISSN: 2455-7218

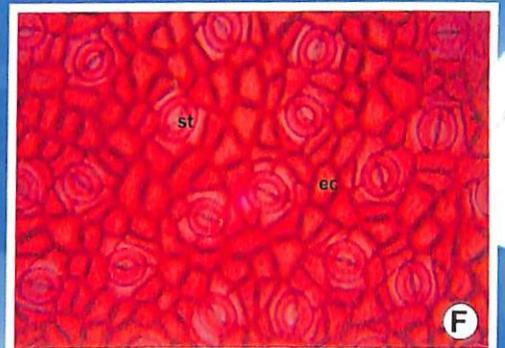
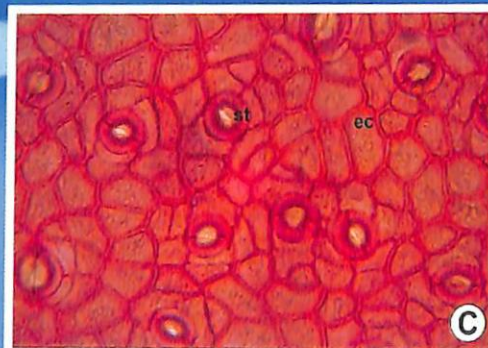
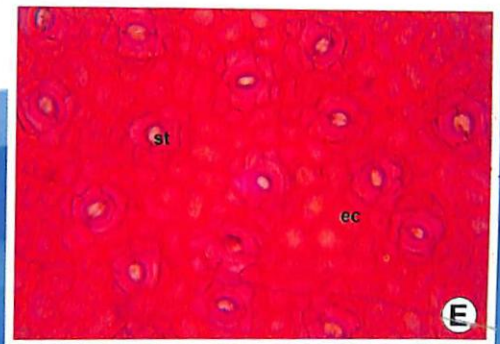
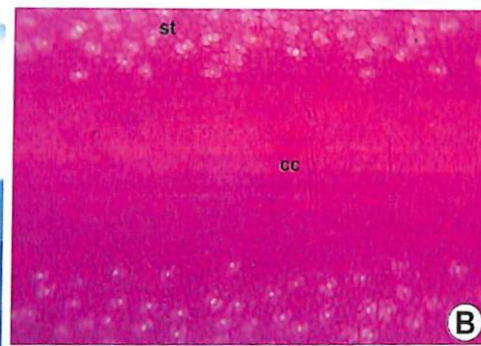
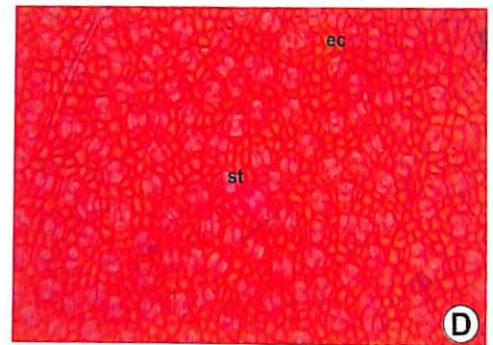
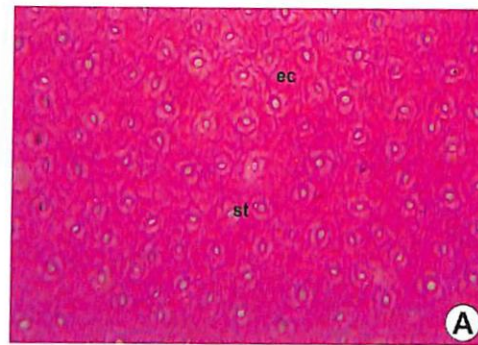


The Journal of the Indian Botanical Society

Dr. A. R. Mehta Commemoration Volume

Vol. 97 (3&4) 2018

GIF: 0.877
SJIF 4.868
NAAS : 3.51



Chief Editor
Y. Vimala

Associate Editors
Alka Srivastava
R.K. Sharma

CONTENTS

- Algal flora of barks of tropical forests of western ghats- perspectives of research
H. D. Ambika and S. R. Krishnamurthy 136-148
- Seasonal variations in physico-chemical characteristics and water quality of Kosi river at Bhagalpur and Katihar district of North Bihar
Rashmi Kumari and Arvind Kumar 149-157
- Screening of efficient IAA producing endophytic diazotrophic bacteria from ethno-medicinal rice of Jharkhand India
Ladly Rani, Vivek Kumar, Ramesh Kumar Pandey and Ashok Kumar 158-165
- Cyanobacterial flora from thermal springs of the Kullu district, Himachal Pradesh, India
V. K. Singh, D. Verma, S. Nayaka, K. Toppo and S. Lavania 166-172
- Qualitative and quantitative analysis of thaumatin like proteins (TLPS) in *In vivo* and *In vitro* cultures of *Gymnema sylvestri*
Saurabha B Zimare, Gitanjali Javir, Jyoti Otageri, Kalpana Pai And Nutan P. Malpathak 173-179
- Field performance and genetic parameters of Dalbergia sissoo Roxb. progenies raised in the plains of Chhattisgarh
Md Nuruj Jaman Islam and M. N. Naugraiya 180-186
- Effect of dormancy breaking treatments on germination, vigour and physio-biochemical changes in seeds of *Rauvolfia serpentina* (L.) Benth. Ex Kurz—endangered medicinal species
Neha Sayal and Anju Thakur 187-193
- Rare and threatened medicinal plants of Todgarh-Raoli wild life sanctuary Rajasthan, India
R. P. Kanther 194-199
- Combining ability and gene action analysis for yield and its components in pearl millet (*Pennisetum glaucum* (L.) R. Br.)
N. Swaminaidu, S. K. Ghosh, R. Chandrashekar and K. Mallikarjuna 200-206
- Ethnobotanical investigations of family Asteraceae among the tribe of Raigad district of Maharashtra state, India
Kalpiti Mhatre and Rajendra Shinde 207-211
- Fusarium*-a biological puzzle*
S. M. Reddy 212-232
- HPTLC and molecular fingerprinting of *Tinospora cordifolia* miers Ex Hook. F. & Thoms.
Samidha G Divekar and Govind T Paratkar 233-243
- Comparative pesticidal properties of *Jatropha curcas*, *Jatropha gossypifolia* and *Ricinus communis* on termite and fungal infected woods
A. A. Abdulrahman, P. O. Ajiboye, M. O. Aderemi, A. A. Al Sahli and I. A. Alaraidh 244-253
- A comparative study on the green synthesis of selenium nanoparticles and evaluation of their antioxidant potential using *Allium sativum* and *Aloe vera* extracts
Jay Vyas and Shafkat Rana 254-263
- Pharmacognostic studies on leaf of *Capparis divaricata*
G. Prabhakar, K. Swetha, P. Kamalakar and K. Shailaja 264-272
- In vitro* plantlet regeneration of tomato (*Solanum lycopersican* Mill. Cv. Pusa Ruby) from shoot tip explants using five cytokinins
T. Ugandhar, M. Venkateshwarlu, G. Odelu, B. Rajendra Prasad and U. Anitha Devi 273-280
- Effect of sewage water irrigation on seed germination, growth and yield
Uday Bhan Prajapati, Shyam Singh and Shiraz A. Wajih 281-287
- Eruca sativa* mill. - a neglected naturalized wild multipurpose plant of Kashmir
Gh. Nabi Joo, Susheel Kumar Raina and Sheikh M. Sultan 288-292
- First report of white rust disease on *Portulaca oleracea* L. caused by *Albugo portulacae* (dc.ex. Duby) Kuntze from India
D. Nagaraju and C. Manoharachary 293-294