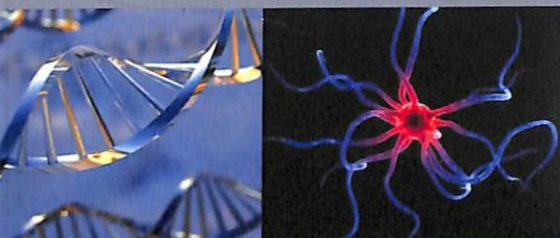
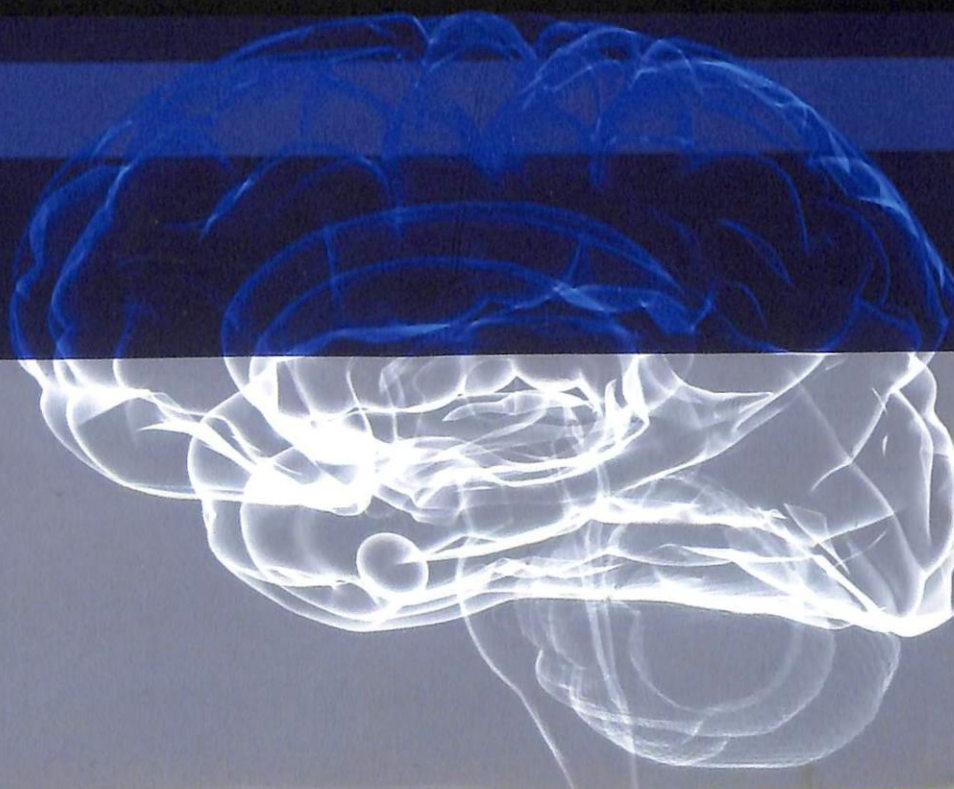


JOURNAL OF
**psychiatric
research**



FLORIAN HOLSBOER
Max Planck Institute of Psychiatry, Munich, Germany
ALAN F. SCHATZBERG
Stanford University School of Medicine, Stanford, USA



JOURNAL OF
**psychiatric
research**

Website: <http://www.elsevier.com/locate/jpsychires/>

Volume 108 January 2019

Contents

Corrigendum to 'Ketamine in electroconvulsive therapy for depressive disorder: A systematic review and meta-analysis' [Journal of Psychiatric Research 104 (2018) 144–156]

L. Ren, J. Deng, S. Min, L. Peng and Q. Chen

1

Thirteen Reasons Why: The impact of suicide portrayal on adolescents' mental health

G.S.d. Rosa, G.S. Andrades, A. Caye, M.P. Hidalgo, M.A.B.d. Oliveira and L.K. Pilz

2

Comparison of treatment options for depression in heart failure: A network meta-analysis

A. Das, B. Roy, G. Schwarzer, M.G. Silverman, O. Ziegler, D. Bandyopadhyay, L.L. Philpotts, S. Sinha, J.A. Blumenthal and S. Das

7

Adjunctive second-generation antipsychotics for specific symptom domains of schizophrenia resistant to clozapine: A meta-analysis

F. Bartoli, C. Crocarno, C. Di Brita, G. Esposito, T.I. Tabacchi, E. Verrengia, M. Clerici and G. Carrà

24

Brain arousal regulation in SSRI-medicated patients with major depression

C. Ulke, D.A. Wittekind, J. Spada, K. Franik, P. Jawinski, T. Hensch and U. Hegerl

34

A new scale for assessing wisdom based on common domains and a neurobiological model: The San Diego Wisdom Scale (SD-WISE)

M.L. Thomas, K.J. Bangen, B.W. Palmer, A. Sirkin Martin, J.A. Avanzino, C.A. Depp, D. Glorioso, R.E. Daly and D.V. Jeste

40

Continued on inside back cover

Abstracted/Indexed in:

Biosis Data., Chemical Abstracts Service, Curr. Cont. SOC & Beh. Sci., Thomson Scientific/BIOMED Database, EMBASE LLBA, MEDLINE, Psychol. Abstr., Psych-INFO, PsychLITCD-ROM, Res. Alert, Curr. Cont. Sci. Cit. Ind., Curr. Cont. Clin. Med., Curr. Cont. Life Sci., Curr. Cont. SCISEARCH Data., Curr. Cont. SOC. Sci. Cit. Ind. Med. Also covered in the abstract and citation database Scopus®. Full text available on ScienceDirect®.

Printed by Henry Ling Ltd, The Dorset Press, Dorchester, UK



Available online at www.sciencedirect.com

ScienceDirect



0022-3956(201901)108:C;1-P



Diminished fronto-limbic functional connectivity in child sexual offenders

J. Kneer, V. Borchardt, C. Kärgel, C. Sinke, C. Massau, G. Tenbergen, J. Ponseti, H. Walter, K.M. Beier, B. Schiffer, K. Schiltz, M. Walter and T.H.C. Kruger

The past and future of novel, non-dopamine-2 receptor therapeutics for schizophrenia: A critical and comprehensive review

R.R. Girgis, A.W. Zoghbi, D.C. Javitt and J.A. Lieberman

Assessment of the psychometric properties of the 17- and 6-item Hamilton Depression Rating Scales in major depressive disorder, bipolar depression and bipolar depression with mixed features

48 *A. Kieslich da Silva, M. Reche, A.F.d.S. Lima, M.P.d.A. Fleck, E. Capp and F.M. Shansis*

84

Bibliometric analysis of manuscript characteristics that influence citations: A comparison of six major psychiatry journals

57 *D.M. Hafeez, S. Jalal and F. Khosa*

90

JOURNAL OF
**psychiatric
research**

Website: <http://www.elsevier.com/locate/jpsychires/>

Volume 109 February 2019

Contents

- A bi-factor model of the Montgomery Åsberg depression rating scale and future cognitive impairments in older adults: A 6-year follow-up study**
M. Zuidersma, L. Sjöberg, A. Pantzar, L. Fratiglioni and H.-X. Wang 1
- The emergence of psychotic experiences in the early adolescence of 22q11.2 Deletion Syndrome**
S.J.R.A. Chawner, M. Niarchou, J.L. Doherty, H. Moss, M.J. Owen and M.B.M. van den Bree 10
- Immunomodulatory effects of antipsychotic treatment on gene expression in first-episode psychosis**
O. Mantere, K. Trontti, J. García-González, I. Balcells, S. Saarnio, T. Mäntylä, M. Lindgren, T. Kiesepä, T. Rajj, J.K. Honkanen, O. Vaarala, I. Hovatta and J. Suvisaari 18
- Telomere shortening in alcohol dependence: Roles of alcohol and acetaldehyde**
N.Yamaki, S. Matsushita, S. Hara, A. Yokoyama, A. Hishimoto and S. Higuchi 27
- Reduced prefrontal-temporal cortical activation during verbal fluency task in obsessive-compulsive disorder: A multi-channel near-infrared spectroscopy study**
J. Liao, T. Li, W. Dong, J. Wang, J. Tian, J. Liu, W. Quan and J. Yan 33
- Influence of age on ECT efficacy in depression and the mediating role of psychomotor retardation and psychotic features**
W.T.C.J. Heijnen, A.M. Kamperman, L.D. Tjokrodipo, W.J.G. Hoogendijk, W.W. van den Broek and T.K. Birkenhager 41
- abcb1ab* p-glycoprotein is involved in the uptake of the novel antidepressant vortioxetine into the brain of mice**
D. Spieler, C. Namendorf, T. Namendorf and M. Uhr 48
- The symptoms at the center: Examining the comorbidity of posttraumatic stress disorder, generalized anxiety disorder, and depression with network analysis**
M. Price, A.C. Legrand, Z.M.F. Brier and L. Hébert-Dufresne 52

Continued on inside back cover

Abstracted/Indexed in:

Biosis Data., Chemical Abstracts Service, Curr. Cont. SOC & Beh. Sci., Thomson Scientific/BIOMED Database, EMBASE LLBA, MEDLINE, Psychol. Abstr., Psych-INFO, PsychLITCD-ROM, Res. Alert, Curr. Cont. Sci. Cit. Ind., Curr. Cont. Clin. Med., Curr. Cont. Life Sci., Curr. Cont. SCISEARCH Data., Curr. Cont. SOC. Sci. Cit. Ind. Med. Also covered in the abstract and citation database Scopus®. Full text available on ScienceDirect®.

Printed by Henry Ling Ltd, The Dorset Press, Dorchester, UK



ELSEVIER

Available online at www.sciencedirect.com

ScienceDirect



0022-3956(201902)109:C;1-N

- Electroacupuncture for tapering off long-term benzodiazepine use: A randomized controlled trial**
W.-F. Yeung, K.-F. Chung, Z.-J. Zhang, S.-P. Zhang, W.-C. Chan, R.M.-K. Ng, C.L.-W. Chan, L.-M. Ho, B.Y.-M. Yit, J.C.-S. Chau, N.C.-L. Lau and L.-X. Lao 59
- Functional neural mechanisms of sensory phenomena in obsessive-compulsive disorder**
C. Brown, R. Shahab, K. Collins, L. Fleysher, W.K. Goodman, K.E. Burdick and E.R. Stern 68
- Brain mechanisms of stress and depression in coronary artery disease**
J.D. Bremner, C. Campanella, Z. Khan, N. Fani, N. Kasher, S. Evans, C. Reiff, S. Mishra, S. Ladd, J.A. Nye, P. Raggi and V. Vaccarino 76
- An investigation of delay and probability discounting in hoarding disorder**
H.C. Levy, B.W. Katz, A. Das, M.C. Stevens and D.F. Tolin 89
- Does exercise improve sleep quality in individuals with mental illness? A systematic review and meta-analysis**
O. Lederman, P.B. Ward, J. Firth, C. Maloney, R. Carney, D. Vancampfort, B. Stubbs, M. Kalucy and S. Rosenbaum 96
- A multifunctional compound ebselen reverses memory impairment, apoptosis and oxidative stress in a mouse model of sporadic Alzheimer's disease**
F. Martini, S.G. Rosa, I.P. Klann, B.C.W. Fulco, F.B. Carvalho, F.L. Rahmeier, M.C. Fernandes and C.W. Nogueira 107
- A randomized controlled trial comparing a "bottom-up" and "top-down" approach to cognitive training in schizophrenia**
C. Jahshan, S. Vinogradov, J.K. Wynn, G. Hellemann and M.F. Green 118
- Prospective acceptance of distinct mobile mental health features in psychiatric patients and mental health professionals**
L. Hendrikoff, L. Kambitz-Illankovic, R. Pryss, F. Semmer, P. Falkai, O. Pogarell, A. Hasan and H. Peters 126
- What is anxious depression? Overlap and agreement between different definitions**
M. Zimmerman, S. Kerr, R. Kiefer, C. Balling and K. Dalrymple 133
- Anger, social support, and suicide risk in U.S. military veterans**
C.R. Wilks, L.A. Morland, K.H. Dillon, M.-A. Mackintosh, S.M. Blakey, H.R. Wagner, VA Mid-Atlantic MIRECC Workgroup and E.B. Elbogen 139
- Attentional bias modification reduces clinical depression and enhances attention toward happiness**
Q. Dai, L. Hu and Z. Feng 145
- Fourteen-year trajectories of posttraumatic stress disorder (PTSD) symptoms in UK military personnel, and associated risk factors**
L. Palmer, G. Thandi, S. Norton, M. Jones, N.T. Fear, S. Wessely and R.J. Rona 156
- Subtypes of aggression in intermittent explosive disorder**
J.R. Fanning, M. Coleman, R. Lee and E.F. Coccaro 164
- The association between the longitudinal course of common mental disorders and subsequent physical activity status in young adults: A 30-year birth cohort study**
S. Suetani, A. Mannun, G.M. Williams, J.M. Najman, J.J. McGrath and J.G. Scott 173
- Interaction of hormonal and social environments in understanding body image concerns in adolescent girls**
K.J. Forney, P.K. Keel, S. O'Connor, C. Sisk, S.A. Burt and K.L. Klump 178
- Profiling of miRNAs in serum of children with attention-deficit hyperactivity disorder shows significant alterations**
F. Zadehbagheri, E. Hosseini, Z. Bagheri-Hosseinabadi, H.M. Rekabdarkolae and I. Sadeghi 185
- Does the frequency of administration of long acting injectable antipsychotics impact psychiatric outcomes and adverse effects: A systematic review and meta-analysis**
E. Ting, S. Kamalvand, D. Shang, D. Siskind and S. Kisely 193
- Contrasting contributions of anhedonia to obsessive-compulsive, hoarding, and post-traumatic stress disorders**
H. Pushkarskaya, K. Sobowale, D. Henick, D.F. Tolin, A. Anticicic, G.D. Pearlson, I. Levy, I. Harpaz-Rotem and C. Pittenger 202

JOURNAL OF psychiatric research

Website: <http://www.elsevier.com/locate/jpsychires/>

Volume 110 March 2019

Contents

Sub-threshold bipolar disorder in medication-free young subjects with major depression: Clinical characteristics and antidepressant treatment response

P. Koirala, B. Hu, M. Altinay, M. Li, A.L. DiVita, K.A. Bryant, H.S. Karne, J.G. Fiedorowicz and A. Anand

Development of a mobile application (App) to delineate “digital chronotype” and the effects of delayed chronotype by bedtime smartphone use

Y.-H. Lin, B.-Y. Wong, S.-H. Lin, Y.-C. Chiu, Y.-C. Pan and Y.-H. Lee

Age differences in DSM-IV borderline personality disorder symptom expression: Results from a national study using item response theory (IRT)

K. McMahon, N. Hoertel, H. Peyre, C. Blanco, C. Fang and F. Limosin

Trait-level facets of impulsivity and momentary, naturalistic eating behavior in children and adolescents with overweight/obesity

A.B. Goldschmidt, K.E. Smith, J.M. Lavender, S.G. Engel and A. Haedt-Matt

L-theanine in the adjunctive treatment of generalized anxiety disorder: A double-blind, randomised, placebo-controlled trial

J. Sarris, G.J. Byrne, L. Cribb, G. Oliver, J. Murphy, P. Macdonald, S. Nazareth, D. Karamacoska, S. Galea, A. Short, C. Ee, Y. Birling, R. Menon and C.H. Ng

31

1 Plasma microRNA expression levels and their targeted pathways in patients with major depressive disorder who are responsive to duloxetine treatment

H.K. Kim, K. Tyryshkin, N. Elmi, M. Dharsee, K.R. Evans, J. Good, M. Javadi, S. McCormack, A.L. Vaccarino, X. Zhang, A.C. Andreazza and H. Feilotter

38

9

Latent toxoplasmosis and psychiatric symptoms – A role of tryptophan metabolism?

C. Bay-Richter, H.N. Buttenschon, O. Mors, A. Eskelund, D. Budac, L. Kærlev and G. Wegener

45

16

Brain network functional connectivity and cognitive performance in major depressive disorder

K.M. Albert, G.G. Potter, B.D. Boyd, H. Kang and W.D. Taylor

51

24

Continued on inside back cover

Abstracted/Indexed in:

Biosis Data., Chemical Abstracts Service, Curr. Cont. SOC & Beh. Sci., Thomson Scientific/BIOMED Database, EMBASE LLBA, MEDLINE, Psychol. Abstr., Psych-INFO, PsychLITCD-ROM, Res. Alert, Curr. Cont. Sci. Cit. Ind., Curr. Cont. Clin. Med., Curr. Cont. Life Sci., Curr. Cont. SCISEARCH Data., Curr. Cont. SOC. Sci. Cit. Ind. Med. Also covered in the abstract and citation database Scopus®. Full text available on ScienceDirect®.

Printed by Henry Ling Ltd, The Dorset Press, Dorchester, UK



Available online at www.sciencedirect.com

ScienceDirect



0022-3956(201903)110:C;1-S

- Ambient temperature and solar insolation are associated with decreased prevalence of SSRI-treated psychiatric disorders**
J.R. Wörtzel, J.G. Norden, B.E. Turner, D.R. Haynor, S.T. Kent, M.Z. Al-Hamdan, D.H. Avery and M.J. Norden 57
- The effectiveness of omega-3 supplementation in reducing ADHD associated symptoms in children as measured by the Conners' rating scales: A systematic review of randomized controlled trials**
M. Abdullah, B. Jowett, P.J. Whittaker and L. Patterson 64
- Discoidin domain receptor 1 gene variants are associated with decreased white matter fractional anisotropy and decreased processing speed in schizophrenia**
C. Gas, E.J. Canales-Rodríguez, J. Radua, N. Abasolo, M.J. Cortés, E. Salvador, G. Muntané, Y. Alemán-Gómez, T. Julià, S. Marsal, J. Sanjuan, M. Guitart, J. Costas, L. Martorell, E. Pomarol-Clotet and E. Vilella 74
- Implications of *de novo* mutations in guiding drug discovery: A study of four neuropsychiatric disorders**
H.-C. So and Y.-H. Wong 83
- Psychotic symptoms in youth with Pediatric Acute-onset Neuropsychiatric Syndrome (PANS) may reflect syndrome severity and heterogeneity**
M. Silverman, J. Frankovich, E. Nguyen, C. Leibold, J. Yoon, G. Mark Freeman Jr, H. Karpel and M. Thienemann 93
- Brain-derived neurotrophic factor is a biomarker for subjective insomnia but not objectively assessable poor sleep continuity**
T. Mikoteit, S. Brand, A. Eckert, E. Holsboer-Trachsler and J. Beck 103
- Changes in the association between postpartum depression and mother-infant bonding by parity: Longitudinal results from the Japan Environment and Children's Study**
A. Tsuchida, K. Hamazaki, K. Matsumura, K. Miura, H. Kasamatsu and H. Inadera, the Japan Environment and Children's Study (JECS) Group (T. Kawamoto, Y. Ohya, R. Kishie, N. Yaegashij, K. Hashimoto, C. Morih, S. Itoi, Z. Yamagataj, H. Inaderak, M. Kamijimal, T. Nakayamam, H. Ison, M. Shimao, Y. Hirookap, N. Sukanumaq, K. Kusuhara and T. Katohs) 110
- A meta-analysis of transcranial direct current stimulation for schizophrenia: "Is more better?"**
J. Kim, Y. Iwata, E. Plitman, F. Caravaggio, J.K. Chung, P. Shah, D.M. Blumberger, B.G. Pollock, G. Remington, A. Graff-Guerrero and P. Gerretsen 117
- Does attrition affect estimates of association: A longitudinal study**
N. Saiepour, J.M. Najman, R. Ware, P. Baker, A.M. Clavarino and G.M. Williams 127
- Are subjective memory complaints indicative of objective cognitive decline or depressive symptoms? Findings from the English Longitudinal Study of Ageing**
A. Brailean, A. Steptoe, G.D. Batty, P. Zaninotto and D.J. Llewellyn 143
- Childhood adversities, negative life events and outcomes of non-pharmacological treatments for depression in primary care: A secondary analysis of a randomized controlled trial**
D. Yacaman-Mendez, M. Hallgren and Y. Forsell 152
- Hypertensive disorders of pregnancy and the risk of anxiety disorders in adolescence: Findings from the Avon Longitudinal Study of Parents and Children**
B.A. Dacheu, J.G. Scott, A. Mamun and R. Alati 159
- Sex differences in response to ketamine as a rapidly acting intervention for treatment resistant depression**
M.P. Freeman, G.I. Papakostas, B. Hoepfner, E. Mazzone, H. Judge, C. Cusin, S. Mathew, G. Sanacora, D. Iosifescu, C. DeBattista, M.H. Trivedi and M. Fava 166
- More optimal but less regulated dorsal and ventral visual networks in patients with major depressive disorder**
H. Chen, K. Liu, B. Zhang, J. Zhang, X. Xue, Y. Lin, D. Zou, M. Chen, Y. Kong, G. Wen, J. Yan and Y. Deng 172

JOURNAL OF psychiatric research

Website: <http://www.elsevier.com/locate/jpsychires/>

Volume 111 April 2019

Contents

- Acknowledgement to Reviewers 2018**
- The role of illness engulfment in the association between insight and depressive symptomatology in schizophrenia**
S. Konsztowicz and M. Lepage
- A schizophrenia associated *CMYA5* allele displays differential binding with desmin**
A. Hsiung, F.J. Naya, X. Chen and R. Shiang
- Child abuse interacts with hippocampal and corpus callosum volume on psychophysiological response to startling auditory stimuli in a sample of veterans**
D.A. Young, T.C. Neylan, L.L. Chao, A. O'Donovan, T.J. Metzler and S.S. Inslicht
- Increased levels of serum leptin in the early stages of psychosis**
L. Martorell, G. Muntané, S. Porta-López, I. Moreno, L. Ortega, I. Montalvo, V. Sanchez-Gistau, R. Monseny, J. Labad and E. Vilella
- A1 Late-life depression and cognitive function among older adults in the U.S.: The National Health and Nutrition Examination Survey, 2011–2014**
J. Wei, M. Ying, L. Xie, E.K. Chandrasekar, H. Lu, T. Wang and C. Li
- Gender inequality and depression among medical students: A global meta-regression analysis**
J.P.G. Pacheco, J.B. Silveira, R.P.C. Ferreira, K. Lo, J.R. Schineider, H.T.A. Giacomini and W.W.S. Tam
- The cortisol awakening response at admission to hospital predicts depression severity after discharge in MDD patients**
FF Eikeseth, S. Denninghaus, M. Cropley, M. Witthöft, M. Pawelzik and S. Sütterlin
- 1 30
8 36
16 44
24

Continued on inside back cover

Abstracted/Indexed in:

Biosis Data., Chemical Abstracts Service, Curr. Cont. SOC & Beh. Sci., Thomson Scientific/BIOMED Database, EMBASE LLBA, MEDLINE, Psychol. Abstr., Psych-INFO, PsychLITCD-ROM, Res. Alert, Curr. Cont. Sci. Cit. Ind., Curr. Cont. Clin. Med., Curr. Cont. Life Sci., Curr. Cont. SCISEARCH Data., Curr. Cont. SOC. Sci. Cit. Ind. Med. Also covered in the abstract and citation database Scopus®. Full text available on ScienceDirect®.

Printed by Henry Ling Ltd, The Dorset Press, Dorchester, UK



Available online at www.sciencedirect.com

ScienceDirect



0022-3956(201904)111:C;1-Q

- Comparative efficacy and tolerability of antipsychotics as augmentations in adults with treatment-resistant obsessive-compulsive disorder: A network meta-analysis**
D.-D. Zhou, X.-X. Zhou, Z. Lv, X.-R. Chen, W. Wang, G.-M. Wang, C. Liu, D.-Q. Li and L. Kuang
- Impact of pharmacogenomics on clinical outcomes in major depressive disorder in the GUIDED trial: A large, patient- and rater-blinded, randomized, controlled study**
J.F. Greden, S.V. Parikh, A.J. Rothschild, M.E. Thase, B.W. Dunlop, C. DeBattista, C.R. Conway, B.P. Forester, F.M. Mondimore, R.C. Shelton, M. Macaluso, J. Li, K. Brown, A. Gilbert, L. Burns, M.R. Jablonski and B. Dechairo
- Comparability of blinded remote and site-based assessments of response to adjunctive esketamine or placebo nasal spray in patients with treatment resistant depression**
S.D. Targum, E. Daly, M. Fedgchin, K. Cooper and J.B. Singh
- Exploration of microbiota targets for major depressive disorder and mood related traits**
Y.-C.E. Chung, H.-C. Chen, H.-C.L. Chou, I.-M. Chen, M.-S. Lee, L.-C. Chuang, Y.-W. Liu, M.-L. Lu, C.-H. Chen, C.-S. Wu, M.-C. Huang, S.-C. Liao, Y.-H. Ni, M.-S. Lai, W.-L. Shih and P.-H. Kuo
- Telomere shortening in blood leukocytes of patients with posttraumatic stress disorder**
D. Avetyan, R. Zakharyan, M. Petrek and A. Arakelyan
- Debt stress, psychological distress and overall health among adults in Ontario**
H.A. Hamilton, C.M. Wickens, A.R. Ialomiteanu and R.E. Mann
- Maternal inflammation during pregnancy and offspring psychiatric symptoms in childhood: Timing and sex matter**
N. Mac Giollaibhuí, E.C. Breen, S.K. Murphy, S.D. Maxwell, B.A. Cohn, N.Y. Krigbaum, P.M. Cirillo, C. Perez, L.B. Alloy, D.A.G. Drabick and L.M. Ellman
- Mortality in hospital patients with and without mental disorders: A data-linkage cohort study**
R.S. Karim, M.M.S. Kwan, A.J.F. Finlay, S. Kondalsamy-Chennakesavan, M.R. Toombs, G.C. Nicholson, M. McGrail and N.S. Gill 104
- 51 **Brain-enriched MicroRNA-184 is downregulated in older adults with major depressive disorder: A translational study**
A.P. Mendes-Silva, P.T. Fujimura, J.R.d. C. Silva, A.L. Teixeira, E.M. Vieira, P.H.G. Guedes, L.S.S. Barroso, M.d.S. Nicolau, J.D.R. Ferreira, L. Bertola, E.d.S. Nicolau, G.T. Tolentino-Araújo, C.M.S.F. Berlezzi, T.S. Rodrigues, L.D.F. Borges, M.d.S. Gomes, L.R.d. Amaral, A.M. Bonetti, C. Ueira-Vieira and B.S. Diniz 110
- 59 **An examination of the relationship between hoarding symptoms and hostility**
B.M. Mathes, G.A. Kennedy, J.R. Cougle and N.B. Schmidt 121
- Seasonality of antidepressant prescriptions and sick leaves**
D. Winkler, B. Reichardt, G.S. Kranz, L. Bartova, S. Kasper and E. Pjrek 128
- 68 **Cannabis use behaviors and prevalence of anxiety and depressive symptoms in a cohort of Canadian medicinal cannabis users**
J. Turna, W. Simpson, B. Patterson, P. Lucas and M. Van Ameringen 134
- 74 **A pilot investigation of neuroimaging predictors for the benefits from pivotal response treatment for children with autism**
J.P. Hegarty, G.W. Gengoux, K.L. Berquist, M.E. Millán, S.M. Tamura, S. Karve, M.D. Rosenthal, J.M. Phillips and A.Y. Hardan 140
- 83 **Clinical and genetic analysis of children with a dual diagnosis of Tourette syndrome and autism spectrum disorder**
K.V. Carias and R. Wevrick 145
- 89 **Exploring anxiety sensitivity in the relationship between pain intensity and opioid misuse among opioid-using adults with chronic pain**
A.H. Rogers, J.M. Shepherd, M.F. Orr, J. Bakhshaie, R.K. McHugh and M.J. Zvolensky 154
- 96

Madhusri
 30.08.2019

JOURNAL OF
**psychiatric
research**

Website: <http://www.elsevier.com/locate/jpsychires/>

Volume 112 May 2019

Contents

Effect of lurasidone vs olanzapine on neurotrophic biomarkers in unmedicated schizophrenia: A randomized controlled trial

M. Jena, R. Ranjan, B.R. Mishra, A. Mishra, S. Nath, P. Sahu, B.R. Meher, A. Srinivasan and R. Maiti

1

Brain penetration of ketamine: Intranasal delivery VS parenteral routes of administration

V. Naidoo, S. Mdanda, S. Ntshangase, T. Naicker, H.G. Kruger, T. Govender, P. Naidoo and S. Baijnath

7

The left dorsolateral prefrontal cortex volume is reduced in adults reporting childhood trauma independent of depression diagnosis

S. Lu, R. Xu, J. Cao, Y. Yin, W. Gao, D. Wang, Z. Wei, S. Hu, M. Huang, L. Li and Y. Xu

12

Differences in multihormonal responses to the dopamine agonist apomorphine between unipolar and bipolar depressed patients

J.A. Monreal, F. Duval, M.-C. Mokrani, S. Fattah and D. Palao

18

Executive functioning in cognitively normal middle-aged offspring of late-onset Alzheimer's disease patients

C. Abulafia, L. Fiorentini, D.A. Loewenstein, R. Curiel-Cid, G. Sevlever, C.B. Nemeroff, M.F. Villarreal, D.E. Vigo and S.M. Guinjoan

23

Behavioral and neural correlates of memory suppression in PTSD

D.R. Sullivan, B. Marx, M.S. Chen, B.E. Depue, S.M. Hayes and J.P. Hayes

30

Continued on inside back cover

Abstracted/Indexed in:

Biosis Data., Chemical Abstracts Service, Curr. Cont. SOC & Beh. Sci., Thomson Scientific/BIOMED Database, EMBASE LLBA, MEDLINE, Psychol. Abstr., Psych-INFO, PsychLITCD-ROM, Res. Alert, Curr. Cont. Sci. Cit. Ind., Curr. Cont. Clin. Med., Curr. Cont. Life Sci., Curr. Cont. SCISEARCH Data., Curr. Cont. SOC. Sci. Cit. Ind. Med. Also covered in the abstract and citation database Scopus®. Full text available on ScienceDirect®.

Printed by Henry Ling Ltd, The Dorset Press, Dorchester, UK



Available online at www.sciencedirect.com

ScienceDirect



0022-3956(201905)112:C;1-0

- Endogenous oxytocin levels are associated with impaired social cognition and neurocognition in schizophrenia**
G.P. Strauss, H.C. Chapman, W.R. Keller, J.I. Koenig, J.M. Gold, W.T. Carpenter and R.W. Buchanan
- Examining the association between prescription opioid misuse and suicidal behaviors among adolescent high school students in the United States**
P. Baiden, G. Graaf, M. Zaami, C.K. Acolatse and Y. Adeku
- Sleep-EEG in patients with primary aldosteronism in comparison to healthy controls and patients with depression**
L. Engler, D.A. Heinrich, C. Adolf, A. Riester, A. Franke, M. Pawlowski, F. Beuschlein, M. Reincke, A. Steiger and H. Künzel
- Estimating patient-specific treatment advantages in the 'Treatment for Adolescents with Depression Study'**
S. Foster, M. Mohler-Kuo, L. Tay, T. Hothorn and H. Seibold
- Set-shifting in adolescents with weight-restored anorexia nervosa and their unaffected family members**
N. Weinbach, C. Bohon and J. Lock 71
- 38 **Sleep complaints and cerebral white matter: A prospective bidirectional study**
D. Kocovska, L. G.M. Cremers, T.S. Lysen, A.I. Luik, M.A. Ikram, M.W. Vernooij and H. Tiemeier 77
- 44 **Attentional bias and childhood maltreatment in clinical depression - An eye-tracking study**
C.M. Bodenschatz, M. Skopinceva, T. Ruß and T. Suslow 83
- 52 **Alteration of miRNA-mRNA interactions in lymphocytes of individuals with schizophrenia**
M.P. Geaghan, J.R. Atkins, A.M. Brichta, P.A. Tooney, R.J. Scott, V.J. Carr and M.J. Cairns 89
- 61 **Glucose-6-phosphate dehydrogenase activity in bipolar disorder and schizophrenia: Relationship to mitochondrial impairment**
J.S. Puthumana and W.T. Regenold 99

Madhavi
30.08.2019
KAIMUNA

JOURNAL OF psychiatric research

Website: <http://www.elsevier.com/locate/jpsychires/>

Volume 113 June 2019

Contents

Association between solar insolation and a history of suicide attempts in bipolar I disorder

M. Bauer, T. Glenn, M. Alda, O.A. Andreassen, E. Angelopoulos, R. Ardan, Y. Ayhan, C. Baethge, R. Bauer, B.T. Baune, C. Becerra-Palars, F. Bellivier, R.H. Belmaker, M. Berk, Y. Bersudsky, S. Bicakci, H. Birabwa-Oketcho, T.D. Bjella, J. Cabrera, E.Y.Wo Cheung, M. Del Zompo, S. Dodd, M. Donix, B. Etain, A. Fagiolini, K.N. Fountoulakis, M.A. Frye, A. Gonzalez-Pinto, J.F. Gottlieb, P. Grof, H. Harima, C. Henry, E.T. Isometsä, S. Janno, F. Kapczinski, M. Kardell, S. Khaldi, S. Kliwiczki, B. König, T.L. Kot, R. Krogh, M. Kunz, B. Lafer, M. Landén, E.R. Larsen, U. Lewitzka, R.W. Licht, C. Lopez-Jaramillo, G. MacQueen, M. Manchia, W. Marsh, M. Martinez-Cengotitabengoa, I. Melle, F. Meza-Urzuá, M.Y. Ming, S. Monteith, G. Morken, E. Mosca, A.A. Mozzhegorov, R. Munoz, S.V. Mythri, F. Nacef, R.K. Nadella, F.G. Nery, R.E. Nielsen, C. O'Donovan, A. Omrani, Y. Osher, H. O. Sorensen, U. Ouali, Y.P. Ruiz, M. Pilhatsch, M. Pinna, F.D.R. da Ponte, D. Quiroz, R. Ramesar, N. Rasgon, M.S. Reddy, A. Reif, P. Ritter, J.K. Rybakowski, K. Sagduyu, B.S. Raghuraman, A.M. Scippa, E. Severus, C. Simhandl, P.W. Stackhouse Jr., D.J. Stein, S. Strejilevich, M. Subramaniam, A.H. Sulaiman, K. Suominen, H. Tagata, Y. Tatebayashi, L. Tondo, C. Torrent, A.E. Vaaler, E. Vares, J. Vech, E. Vieta, B. Viswanath, M. Yoldi-Negrete, M. Zetin, Y. Zgueb and P.C. Whybrow

1

Health benefits of a physical exercise program for inpatients with mental health; a pilot study

Z. Mazyarkin, T. Peleg, I. Golani, L. Sharony, I. Kremer and A. Shamir

10

Brain response features during forced break could predict subsequent recovery in internet gaming disorder: A longitudinal study

G. Dong, X. Liu, H. Zheng, X. Du and M.N. Potenza

17

Adjunctive ondansetron for schizophrenia: A systematic review and meta-analysis of randomized controlled trials

W. Zheng, D.-B. Cai, Q.-E. Zhang, J. He, L.-Y. Zhong, K. Sim, G.S. Ungvari, Y.-P. Ning and Y.-T. Xiang

27

Microduplications at the 15q11.2 BP1-BP2 locus are enriched in patients with anorexia nervosa

X. Chang, H. Qu, Y. Liu, J. Glessner, C. Hou, F. Wang, J. Li, P. Sleiman and H. Hakonarson

34

Topographic deficits in sleep spindle density and duration point to frontal thalamo-cortical dysfunctions in first-episode psychosis

R.E. Kaskie, B. Graziano and F. Ferrarelli

39

Continued on inside back cover

Abstracted/Indexed in:

Biosis Data., Chemical Abstracts Service, Curr. Cont. SOC & Beh. Sci., Thomson Scientific/BIOMED Database, EMBASE LLBA, MEDLINE, Psychol. Abstr., Psych-INFO, PsychLITCD-ROM, Res. Alert, Curr. Cont. Sci. Cit. Ind., Curr. Cont. Clin. Med., Curr. Cont. Life Sci., Curr. Cont. SCISEARCH Data., Curr. Cont. SOC. Sci. Cit. Ind. Med. Also covered in the abstract and citation database Scopus®. Full text available on ScienceDirect®.

Printed by Henry Ling Ltd. The Dorset Press, Dorchester, UK



ELSEVIER

Available online at www.sciencedirect.com

ScienceDirect



0022-3956(201906)113:C;1-M

- Corrigendum to “Psychotic symptoms in youth with Pediatric Acute-onset Neuropsychiatric Syndrome (PANS) may reflect syndrome severity and heterogeneity”** [J. Psychiatr. Res. 110 (2019) 93–102]
M. Silverman, J. Frankovich, E. Nguyen, C. Leibold, J. Yoon, G.M. Freeman Jr., H. Karpel and M. Thienemann
- GHQ score changes from teenage to young adulthood**
A. Furnham and H. Cheng
- Blood and brain protein levels of ubiquitin-conjugating enzyme E2K (UBE2K) are elevated in individuals with schizophrenia**
H. Meiklejohn, M.S. Mostaid, S. Luza, S.G. Mancuso, D. Kang, S. Atherton, D.A. Rothmond, C.S. Weickert, C.M. Opazo, C. Pantelis, A.I. Bush, I.P. Everall and C.A. Bousman
- Is improved fitness following a 12-week exercise program associated with decreased symptom severity, better wellbeing, and fewer sleep complaints in patients with major depressive disorders? A secondary analysis of a randomized controlled trial**
M. Gerber, A. Minghetti, J. Beck, L. Zahner and L. Donath
- Genetic predictor of current suicidal ideation in US service members deployed to Iraq and Afghanistan**
L. Zhang, X.-Z. Hu, D.M. Benedek, C.S. Fullerton, R.D. Forsten, J.A. Naifeh and X. Li
- The dynamic course of peripartum depression across pregnancy and childbirth**
S. Dekel, T. Ein-Dor, A. Ruohomäki, J. Lampi, S. Voutilainen, T.-P. Tiomainen, S. Heinonen, K. Kumpulainen, J. Pekkanen, L. Keski-Nisula, M. Pasanen and S.M. Lehto
- Low-frequency rTMS is better tolerated than high-frequency rTMS in healthy people: Empirical evidence from a single session study**
M. Kaur, J.A. Michael, B.M. Fitzgibbon, K.E. Hoy and P.B. Fitzgerald
- Elucidating the glutamatergic processes underlying mismatch negativity deficits in early stage bipolar disorder and schizophrenia: A combined ¹H-MRS and EEG study**
M. Kaur, K.M. Chitty, J. Lagopoulos, I.B. Hickie, S.L. Duffy and D.F. Hermens 83
- 45 **Similarly in depression, nuances of gut microbiota: Evidences from a shotgun metagenomics sequencing study on major depressive disorder versus bipolar disorder with current major depressive episode patients**
H. Rong, X.-h. Xie, J. Zhao, W.-t. Lai, M.-b. Wang, D. Xu, Y.-h. Liu, Y.-y. Guo, S.-x. Xu, W.-f. Deng, Q.-f. Yang, L. Xiao, Y.-l. Zhang, F.-s. He, S. Wang and T.-b. Liu 90
- 46
- 51 **Physical activity for diabetes-related depression: A systematic review and meta-analysis**
Z. Narita, T. Inagawa, A. Stickley and N. Sugawara 100
- Distinct resting state functional connectivity abnormalities in hoarding disorder and major depressive disorder**
H.C. Levy, M.C. Stevens, D.C. Glahn, K. Pancholi and D.F. Tolin 108
- 58 **Cognitive functioning as a predictor of response to comprehensive cognitive remediation**
N.R. DeTore, K.T. Mueser, J.A. Byrd and S.R. McGurk 117
- 65 **The assessment of resistance to antidepressant treatment: Rationale for the Antidepressant Treatment History Form: Short Form (ATHF-SF)**
H.A. Sackeim, S.T. Aaronson, M.T. Bunker, C.R. Conway, M.A. Demitrack, M.S. George, J. Prudic, M.E. Thase and A.J. Rushi 125
- 72 **Neurofilament light chain as a blood biomarker to differentiate psychiatric disorders from behavioural variant frontotemporal dementia**
M.R. Al Shweiki, P. Steinacker, P. Oeckl, B. Hengerer, A. Danek, K. Fassbender, J. Diehl-Schmid, H. Jahn, S. Anderl-Straub, A.C. Ludolph, C. Schönfeldt-Lecuona and M. Otto 137
- 79

Madhum
30.08.2019

JOURNAL OF psychiatric research

Website: <http://www.elsevier.com/locate/jpsychires/>

Volume 114 July 2019

Contents

Interplay between pro-inflammatory cytokines, childhood trauma, and executive function in depressed adolescents

A.T. Peters, X. Ren, K.L. Bessette, B.I. Goldstein, A.E. West, S.A. Langenecker and G.N. Pandey

1

Speech production and disorganization in schizotypy: Investigating the role of cognitive and affective systems

M.P. Marggraf, B.J. Davis, K.L. Hardin, S.J. Abplanalp, J.A. Haller, P. DeCrescenzo and K.S. Minor

11

Exploring the role of BDNF DNA methylation and hydroxymethylation in patients with obsessive compulsive disorder

C. D'Addario, F. Bellia, B. Benatti, B. Grancini, M. Vismara, M. Pucci, V. De Carlo, C. Viganò, D. Galimberti, C. Fenoglio, E. Scarpini, M. Maccarrone and B. Dell'Osso

17

Manual or electroacupuncture as an add-on therapy to SSRIs for depression: A randomized controlled trial

B. Zhao, Z. Li, Y. Wang, X. Ma, X. Wang, X. Wang, J. Liu, Y. Huang, J. Zhang, L. Li, X. Hu, J. Jiang, S. Qu, Q. Chai, M. Song, X. Yang, T. Bao and Y. Fei

24

Treatment of anxiety and mood comorbidities in cognitive-behavioral and psychodynamic therapies for panic disorder

J.R. Keefe, D.L. Chambless, J.P. Barber and B.L. Milrod

34

Analyzing DNA methylation patterns in subjects diagnosed with schizophrenia using machine learning methods

B. Torabi Moghadam, M. Etemadikhah, G. Rajkowska, C. Stockmeier, M. Grabherr, J. Komorowski, L. Feuk and E.L. Carlström

41

Peripheral blood microRNA levels in females with cocaine use disorder

T.W. Viola, B.A. Heberle, A. Zaparte, B. Sanvicente-Vieira, L.M. Wainer, G.R. Fries, C. Wals-Bass and R. Grassi-Oliveira

48

Chronic mild stress induced anxiety-like behaviors can be attenuated by inhibition of NOX2-derived oxidative stress

H. Lv, C. Zhu, R. Wu, H. Ni, J. Lian, Y. Xu, Y. Xia, G. Shi, Z. Li, R.B. Caldwell, R.W. Caldwell, L. Yao and Y. Chen

55

Continued on inside back cover

Abstracted/Indexed in:

Biosis Data., Chemical Abstracts Service, Curr. Cont. SOC & Beh. Sci., Thomson Scientific/BIOMED Database, EMBASE LLBA, MEDLINE, Psychol. Abstr., Psych-INFO, PsychLITCD-ROM, Res. Alert, Curr. Cont. Sci. Cit. Ind., Curr. Cont. Clin. Med., Curr. Cont. Life Sci., Curr. Cont. SCISEARCH Data., Curr. Cont. SOC. Sci. Cit. Ind. Med. Also covered in the abstract and citation database Scopus®. Full text available on ScienceDirect®.

Printed by Henry Ling Ltd. The Dorset Press, Dorchester, UK



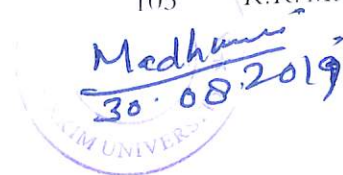
Available online at www.sciencedirect.com

ScienceDirect



0022-3956(201907)114:C;1-K

- Getting to precision psychopharmacology: Combining clinical and genetic information to predict fat gain from aripiprazole**
H. Oughli, E.J. Lenze, A.E. Locke, M.D. Yingling, Y. Zhong, J.P. Miller, C.F. Reynolds III, B.H. Mulsant, J.W. Newcomer, T.R. Peterson, D.J. Müller and G.E. Nicol 67
- Relationship between induced abortion and the incidence of depression, anxiety disorder, adjustment disorder, and somatoform disorder in Germany**
L. Jacob, K. Kostev, C. Gerhard and M. Kalder
- Predictors of recurrence in a sample of 508 outpatients with major depressive disorder**
G. Serafini, F. Santi, X. Gonda, A. Aguglia, A. Fiorillo, M. Pompili, A.F. Carvalho and M. Amore
- Schizotypal personality disorder in individuals with the Attenuated Psychosis Syndrome: Frequent co-occurrence without an increased risk for conversion to threshold psychosis**
A.W. Zoghbi, J.A. Bernanke, J. Gleichman, M.D. Masucci, C.M. Corcoran, A. Califano, J. Segovia, T. Colibazzi, M.B. First, G. Brucato and R.R. Girgis
- Transcranial direct current stimulation does not improve memory deficits or alter pathological hallmarks in a rodent model of Alzheimer's disease**
E. Gondard, M.L. Soto-Montenegro, A. Cassol, A.M. Lozano and C. Hamani 93
- Bullying and psychosis: The impact of chronic traumatic stress on psychosis risk in 22q11.2 deletion syndrome - a uniquely vulnerable population**
D. Mayo, K.A. Bolden, T.J. Simon and T.A. Niendam
- Risk and associated factors for a future schizophrenia diagnosis after an index diagnosis of unspecified psychotic disorder: A population-based study**
J.M. Hensel, M.J. Chartier, O. Ekuma, L. MacWilliam, N. Mota, R.O. Tachere, C. McDougall and J.M. Bolton 105
- Efficacy of repetitive transcranial magnetic stimulation using a figure-8-coil or an H1-Coil in treatment of major depressive disorder; A randomized clinical trial**
I. Filipčić, I. Šimunović Filipčić, Ž. Milovac, S. Sučić, T. Gajšak, E. Ivezić, S. Bašić, Ž. Bajić and M. Heilig 113
- Social exclusion in schizophrenia: Psychological and cognitive consequences**
L.F. Reddy, M.R. Irwin, E.C. Breen, E.A. Reavis and M.F. Green 120
- Changes in facial emotion expression during a psychotherapeutic intervention for patients with borderline personality disorder**
I. Arango, E. Miranda, J.C. Sánchez Ferrer, A. Fresán, M.A. Reyes Ortega, A.N. Vargas, S. Barragán, J. Villanueva-Valle, J. Muñoz-Delgado and R. Robles 126
- A controlled study of the efficacy and safety of tandospirone citrate combined with escitalopram in the treatment of vascular depression: A pilot randomized controlled trial at a single-center in China**
H. Chen, Q. Lin, T. Lin, Y. Lin, X. Lin, R. Chen, L. Luo, F. Lin and Y. Xiao 133
- The association between emotional and instrumental social support and risk of suicide death: A population-based cohort study**
T. Otsuka, Y. Tomata, S. Zhang, F. Tanji, Y. Sugawara and I. Tsuji 141
- Letter to the editor: Dietary nitrates may reduce cardiorenal side-effects of lithium therapy in older subjects**
J.J. Mooney 147
- Traumatic brain injury and coextensive psychopathology: New evidence from the 2016 Nationwide Emergency Department Sample (NEDS)**
K.J. Holzer, J.T. Carbone, M. DeLisi and M.G. Vaughn 149
- Patterns and predictors of family environment among adolescents at high and low risk for familial bipolar disorder**
E.K. Stapp, R.J. Musci, J.M. Fullerton, A.L. Glowinski, M. McInnis, P.B. Mitchell, L.A. Hulvershorn, N. Ghaziuddin, G.M.P. Roberts, K.R. Merikangas, J.I. Nurnberger Jr. and H.C. Wilcox 153



JOURNAL OF
**psychiatric
research**

Website: <http://www.elsevier.com/locate/jpsychires/>

Volume 115 August 2019

Contents

Depression- and anxiogenic-like behaviors induced by lipopolysaccharide in mice are reversed by a selenium-containing indolyl compound: Behavioral, neurochemical and computational insights involving the serotonergic system

A.M. Casaril, M. Domingues, D. de Andrade Lourenço, P.T. Birmann, N. Padilha, B. Vieira, K. Beghini, F.K. Seixas, T. Collares, E.J. Lenardão and L. Savegnago

Maternal deprivation increases microglial activation and neuroinflammatory markers in the prefrontal cortex and hippocampus of infant rats

V.V. Giridharan, G.Z. Réus, S. Selvaraj, G. Scaini, T. Barichello and J. Quevedo

Na⁺, K⁺-ATPase α 3 isoform in frontal cortex GABAergic neurons in psychiatric diseases

A. Hodes, H. Rosen, H. Cohen-Ben Ami and D. Lichtstein

Antipsychotic-induced weight gain and birth weight in psychosis: A fetal programming model

M. Garriga, E. Fernandez-Egea, A. Mallorqui, L. Serrano, C. Oliveira, E. Parellada, B. Kirkpatrick, E. Vieta, M. Bernardo and C. Garcia-Rizo

29

Autism symptoms, depression, and active social avoidance in schizophrenia: Association with self-reports and informant assessments of everyday functioning

P.D. Harvey, E. Deckler, M.T. Jones, L.F. Jarskog, D.L. Penn and A.E. Pinkham

36

Anxiety disorders in childhood are associated with youth IL-6 levels: A mediation study including metabolic stress and childhood traumatic events

A. de Baumont, A. Bortoluzzi, B. Wollenhaupt de Aguiar, E. Scotton, L.S. Pinto Guimarães, F. Kapczinski, C.T. Belem da Silva and G.G. Manfro

43

Continued on inside back cover

Abstracted/Indexed in:

Biosis Data., Chemical Abstracts Service, Curr. Cont. SOC & Beh. Sci., Thomson Scientific/BIOMED Database, EMBASE LLBA, MEDLINE, Psychol. Abstr., Psych-INFO, PsychLITCD-ROM, Res. Alert, Curr. Cont. Sci. Cit. Ind., Curr. Cont. Clin. Med., Curr. Cont. Life Sci., Curr. Cont. SCISEARCH Data., Curr. Cont. SOC. Sci. Cit. Ind. Med. Also covered in the abstract and citation database Scopus[®]. Full text available on ScienceDirect[®].

Printed by Henry Ling Ltd. The Dorset Press, Dorchester, UK



Available online at www.sciencedirect.com

ScienceDirect



0022-3956(201908)115:C;1-I

- Animal-assisted therapy for schizophrenia and related disorders: A systematic review**
E.L. Hawkins, R.D. Hawkins, M. Dennis, J.M. Williams and S.M. Lawrie 51
- Prospective associations of negative mood and emotion regulation in the occurrence of binge eating in binge eating disorder**
J. Svaldi, D. Werle, E. Naumann, E. Eichler and M. Berking 61
- Beneficial effects of Silexan on sleep are mediated by its anxiolytic effect**
E. Seifritz, S. Schläpke and E. Holsboer-Trachsler 69
- Sleep disturbance and physiological regulation among young adults with prior depression**
J.L. Hamilton, J.P. Stange, T.A. Burke, P.L. Franzen and L.B. Alloy 75
- Internet-delivered computerized cognitive & affective remediation training for the treatment of acute and chronic posttraumatic stress disorder: Two randomized clinical trials**
G.A. Fozzo, N.B. Fine, R.N. Wright, M. Achituv, Y.V. Zaiko, O. Merin, A.Y. Shalev and A. Etkin 82
- A meta-analysis of pro-inflammatory cytokines in autism spectrum disorders: Effects of age, gender, and latitude**
A. Saghazadeh, B. Ataieinia, K. Keynejad, A. Abdolalizadeh, A. Hirbod-Mobarakeh and N. Rezaei 90
- Augmentation effect of ketamine by guanosine in the novelty-suppressed feeding test is dependent on mTOR signaling pathway**
A. Camargo, F.L. Pazini, J.M. Rosa, I.A. V.Wolin, M. Moretti, P.B. Rosa, V.B. Neis and A.L.S. Rodrigues 103
- Meta-analysis of the positive and Negative Syndrome Scale (PANSS) factor structure**
A. Shafer and F. Dazzi 113
- Comparison of quetiapine immediate- and extended-release formulations for bipolar depression: A systematic review and network meta-analysis of double-blind, randomized placebo-controlled trials**
T. Kishi, T. Ikuta, K. Sakuma, Y. Matsuda and N. Iwata 121
- MicroRNA-140-5p: A novel circulating biomarker for early warning of late-onset post-stroke depression**
H.-b. Liang, J.-r. He, X.-q. Tu, K.-q. Ding, G.-Y. Yang, Y. Zhang and L.-l. Zeng 129
- A systematic review of the safety and effectiveness of repetitive transcranial magnetic stimulation in the treatment of peripartum depression**
J. Cole, K. Bright, L. Gagnon and A. McGirr 142
- The role of overlapping excitatory symptoms in major depression: are they relevant for the diagnosis of mixed state?**
G.E. Brancati, E. Vieta, J.-M. Azorin, J. Angst, C.L. Bowden, S. Mosolov, A.H. Young and G. Perugi 151
- Altered microRNA 5692b and microRNA let-7d expression levels in children and adolescents with attention deficit hyperactivity disorder**
S.U. Aydin, B. Kabukcu Basay, G.O. Cetin, A. Gungor Aydin and E. Tepeli 158
- Interactome Analyses implicated CAMK2A in the genetic predisposition and pharmacological mechanism of Bipolar Disorder**
H. Li, D.-S. Zhou, H. Chang, L. Wang, W. Liu, S.-X. Dai, C. Zhang, J. Cai, W. Liu, X. Li, W. Fan, W. Tang, W. Tang, F. Liu, Y. He, Y. Bai, Z. Hu, X. Xiao, L. Gao and M. Li 165

Madhu
 30.08.2019

JOURNAL OF psychiatric research

Website: <http://www.elsevier.com/locate/jpsychires/>

Volume 116 September 2019

Contents

- Birth month and later diagnosis of schizophrenia. A population-based cohort study in Sweden**
H. Karlsson, H. Dal, R.M. Gardner, E.F. Torrey and C. Dalman 1
- Mild traumatic brain injury characteristics do not negatively influence cognitive processing therapy attendance or outcomes**
L.D. Crocker, S.M. Jurick, K.R. Thomas, A.V. Keller, M. Sanderson-Cimino, S.N. Hoffman, B. Boyd, C. Rodgers, S.B. Norman, A.J. Lang, E.W. Twamley and A.J. Jak 7
- Electronic Ecological Momentary Assessment (EMA) in youth with bipolar disorder: Demographic and clinical predictors of electronic EMA adherence**
A. Gershon, C.N. Kaufmann, J. Torous, C. Depp and T.A. Ketter 14
- Neural mechanisms of expectancy-based placebo effects in antidepressant clinical trials**
S. Zilcha-Mano, Z. Wang, B.S. Peterson, M.M. Wall, Y. Chen, T.D. Wager, P.J. Brown, S.P. Roose and B.R. Rutherford 19
- Development of a computerized adaptive screening tool for overall psychopathology ("p")**
T.M. Moore, M.E. Calkins, T.D. Satterthwaite, D.R. Roalf, A.F.G. Rosen, R.C. Gur and R.E. Gur 26
- Structural connectivity and risk for anhedonia after trauma: A prospective study and replication**
N. Fani, V. Michopoulos, S.J.H. van Rooij, C. Clendinen, R.A. Hardy, T. Jovanovic, B.O. Rothbaum, K.J. Ressler and J.S. Stevens 34

Continued on inside back cover

Abstracted/Indexed in:

Biosis Data., Chemical Abstracts Service, Curr. Cont. SOC & Beh. Sci., Thomson Scientific/BIOMED Database, EMBASE LLBA, MEDLINE, Psychol. Abstr., Psych-INFO, PsychLITCD-ROM, Res. Alert, Curr. Cont. Sci. Cit. Ind., Curr. Cont. Clin. Med., Curr. Cont. Life Sci., Curr. Cont. SCISEARCH Data., Curr. Cont. SOC. Sci. Cit. Ind. Med. Also covered in the abstract and citation database Scopus®. Full text available on ScienceDirect®.

Printed by Henry Ling Ltd, The Dorset Press, Dorchester, UK



ELSEVIER

Available online at www.sciencedirect.com

ScienceDirect



0022-3956(201909)116:C;1-G

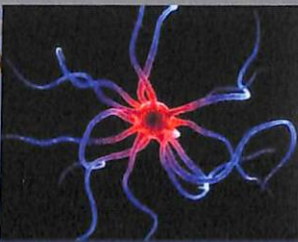
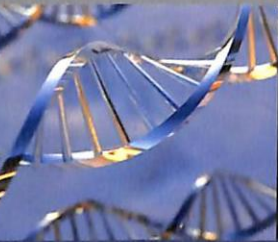
- DNA methylation from germline cells in veterans with PTSD**
D. Mehta, E.S. Pelzer, D. Bruenig, B. Lawford, S. McLeay, C.P. Morris, J.N. Gibson, R. McD. Young and J. Voisey 42
- Impulsivity in the self-harm and suicidal behavior of young people: A systematic review and meta-analysis**
C.M. McHugh, R.S. Chun Lee, D.F. Hermens, A. Corderoy, M. Large and I.B. Hickie 51
- 4,4'-Dichlorodiphenyl diselenide reverses a depressive-like phenotype, modulates prefrontal cortical oxidative stress and dysregulated glutamatergic neurotransmission induced by subchronic dexamethasone exposure to mice**
S.O. Heck, V.A. Zborowski, C.B. Quines and C.W. Nogueira 61
- Obsessive compulsive personality traits: Understanding the chain of pathogenesis from health to disease**
J.E. Grant and S.R. Chamberlain 69
- Cue-elicited craving, thalamic activity, and physiological arousal in adult non-dependent drinkers**
W. Wang, S. Zhornitsky, T.M. Le, I. Dhingra, S. Zhang, J.H. Krystal and C.-s.R. Li 74
- Conflicts of interest and outcomes of clinical trials of antidepressants: An 18-year retrospective study**
A. Waqas, A.A. Baig, M.A. Khalid, K.K. Aedma and S. Naveed 83
- A virtual reality counterconditioning procedure to reduce methamphetamine cue-induced craving**
Y.-g. Wang, M.-h. Liu and Z.-h. Shen 88
- Do human subject safeguards matter to potential participants in psychiatric genetic research?**
L. W. Roberts, J.P. Kim, T. Tsungmeyer and L.B. Dunn 95
- Interaction of childhood trauma with rs1360780 of the FKBP5 gene on trait resilience in a general population sample**
J. Terock, S. Van der Auwera, A. Hannemann, D. Janowitz, G. Homuth, A. Teumer and H.J. Grabe 104
- Capturing behavioral indicators of persecutory ideation using mobile technology**
B. Buck, K.A. Hallgren, E. Scherer, R. Brian, R. Wang, W. Wang, A. Campbell, T. Choudhury, M. Hauser, J.M. Kane and D. Ben-Zeev 112
- Measuring social support in psychiatric patients and controls: Validation and reliability of the shortened Close Persons Questionnaire**
D.J.C. Hanssen, I.M. Rabeling-Keus, P.L.B.J. Lucassen, P. Naarding, R.H.S. van den Brink, H.C. Comijs, B.W.J.H. Penninx and R.C. Oude Voshaar 118
- Gray matter volume changes following antipsychotic therapy in first-episode schizophrenia patients: A longitudinal voxel-based morphometric study**
F. Guo, Y.-Q. Zhu, C. Li, X.-R. Wang, H.-N. Wang, W.-M. Liu, L.-X. Wang, P. Tian, X.-W. Kang, L.-B. Cui, Y.-B. Xi and H. Yin 126
- Relationship between change in in-vivo exposure distress and PTSD symptoms during exposure therapy for active duty soldiers**
A.M. Norr, K.J. Bourassa, E.S. Stevens, M.J. Hawrilenko, S.T. Michael and G.M. Reger 133
- The relationship between alpha asymmetry and ADHD depends on negative affect level and parenting practices**
B.R. Alperin, C.J. Smith, H.C. Gustafsson, M.T. Figuracion and S.L. Karalunas 138
- Prevalence of obstructive sleep apnea in suicidal patients with major depressive disorder**
W.W. McCall, R.M. Benca, M.E. Rumble, D. Case, P.B. Rosenquist and A.D. Krystal 147
- Daytime light exposure in daily life and depressive symptoms in bipolar disorder: A cross-sectional analysis in the APPLE cohort**
Y. Esaki, T. Kitajima, K. Obayashi, K. Saeki, K. Fujita and N. Iwata 151
- What I have is what I am: Differences in demographics, suicidal thoughts and behaviors, and firearm behavior and beliefs between firearm owners who do and do not primarily identify as firearm owners**
M.D. Anestis and C. Houtsma 157

Depression moderates the relationships between hallucinations, delusions, and suicidal ideation: The cumulative effect of experiencing both hallucinations and delusions <i>L.A. Bornheimer, A. Zhang, N. Tarrrier, J. Li, Y. Ning and J.A. Himle</i>	166	Reply to Wang and Chen <i>W.-F. Yeung and B. Y.-M. Yu</i>	187
Associations between childhood maltreatment and risk of myocardial infarction in adulthood: Results from the National Epidemiologic Survey on alcohol and Related Conditions <i>P.-H. Chou and K.C. Koenen</i>	172	Letter to the editor: When does selection generate bias in clinical samples? <i>M. Höfler S. Trautmann</i>	189
Recall accuracy for the symptoms of a major depressive episode among clinical trial participants <i>B.W. Dunlop, M. Granros, A. Lechner, T. Mletzko-Crowe, C.B. Nemeroff, H.S. Mayberg and W.E. Craighead</i>	178	Response to letter to the editor: When does selection generate bias in clinical samples? <i>N. Saiepour, J.M. Najman, R.S. Ware, P. Baker, A. Clavarino G.M. Williams</i>	191
Letter to the editor: Methodological comments to "Electroacupuncture for tapering off long-term benzodiazepine use: A randomized controlled trial" <i>C. Wang and Y.-f. Chen</i>	185	Issues with inclusion and interpretation; a cause for concern in mHealth reviews? <i>J. Firth J. Torous</i>	193
		Response to letter <i>K. Wang, D.S. Varma and M. Proserpi</i>	195





JOURNAL OF
**psychiatric
research**

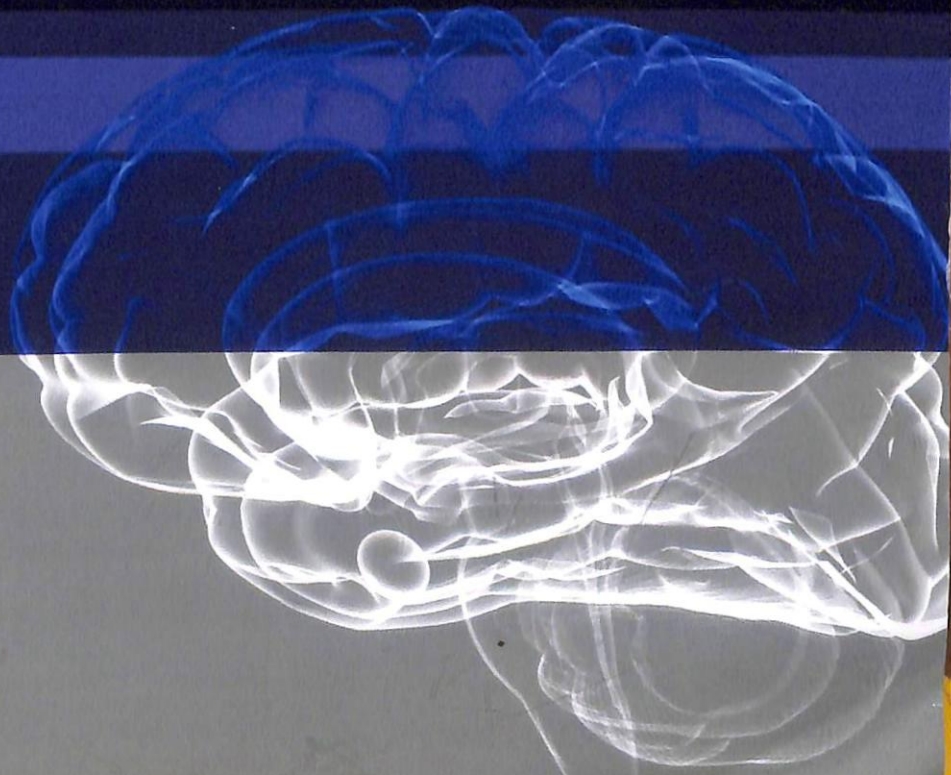


FLORIAN HOLSBOER

Max Planck Institute of Psychiatry, Munich, Germany

ALAN F. SCHATZBERG

Stanford University School of Medicine, Stanford, USA



JOURNAL OF
**psychiatric
research**

Website: <http://www.elsevier.com/locate/jpsychires/>

Volume 117 October 2019

Contents

- Circadian patterns of hallucinatory experiences in patients with schizophrenia: Potentials for chrono-pharmacology**
T. Koizumi, T. Suzuki, N.S. Pillai, R.R. Bies, H. Takeuchi, K. Yoshimura, M. Mimura and H. Uchida 1
- Holocaust history is not reflected in telomere homeostasis in survivors and their offspring**
K. Konečná, M. Lyčka, L. Nohelová, M. Petráková, M. Fňášková, E. Koritáková, P.P. Sováková, S. Brabencová, M. Preiss, I. Rektor, J. Fajkus and M. Fojtová
- Clinical correlates of mind wandering in adults with ADHD**
J. Biederman, J. Lanier, M. DiSalvo, E. Noyes, R. Fried, K.Y. Woodworth, I. Biederman and S.V. Faraone 15
- Factors associated with fatigue in patients with insomnia**
S.J. Kim, S. Kim, S. Jeon, E.B. Leary, F. Barwick and E. Mignot 24
- A novel biomarker of cardiometabolic pathology in schizophrenia?**
E.E. Lee, D.D. Sears, J. Liu, H. Jin, X.M. Tu, L.T. Eyler and D.V. Jeste 31
- Circadian skin temperature rhythms, circadian activity rhythms and sleep in individuals with self-reported depressive symptoms**
N. Lorenz, J. Spada, C. Sander, S.G. Riedel-Heller and U. Hegerl 38
- Genome-wide DNA methylomic differences between dorsolateral prefrontal and temporal pole cortices of bipolar disorder**
A.M.-C. Ho, S.J. Winham, S.M. Armasu, C.J. Blacker, V. Millischer, C. Lavebratt, J.C. Overholser, G.J. Jurjus, L. Dieter, G. Mahajan, G. Rajkowska, E.J. Vallender, C.A. Stockmeier, K.D. Robertson, M.A. Frye, D.-S. Choi and M. Veldic 45

Continued on inside back cover

Abstracted/Indexed in:

Biosis Data., Chemical Abstracts Service, Curr. Cont. SOC & Beh. Sci., Thomson Scientific/BIOMED Database, EMBASE LLBA, MEDLINE, Psychol. Abstr., Psych-INFO, PsychLITCD-ROM, Res. Alert, Curr. Cont. Sci. Cit. Ind., Curr. Cont. Clin. Med., Curr. Cont. Life Sci., Curr. Cont. SCISEARCH Data., Curr. Cont. SOC. Sci. Cit. Ind. Med. Also covered in the abstract and citation database Scopus®. Full text available on ScienceDirect®.

Printed by Henry Ling Ltd, The Dorset Press, Dorchester, UK



Available online at www.sciencedirect.com

ScienceDirect



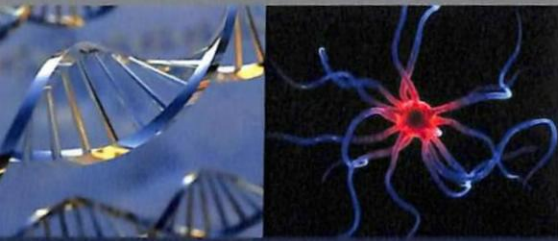
0022-3956(201910)117:C;1-L

- Serotonergic multilocus genetic variation moderates the association between major interpersonal stress and adolescent depressive symptoms: Replication and candidate environment specification**
L.R. Starr, S. Vrshek-Schallhorn and C.B. Stroud 55
- Mediating effects of hair cortisol on the mutual association of job burnout and insomnia: A retrospective exploratory study**
C. Wang, J. Dai and J. Li 62
- Online sexual solicitation in adolescents; socio-demographic risk factors and association with psychiatric disorders, especially posttraumatic stress disorder**
Y.E. Dönmez and N. Soylu 68
- Efficacy and safety of Chinese herbal medicine for depression: A systematic review and meta-analysis of randomized controlled trials**
Y. Wang, Y.-h. Shi, Z. Xu, H. Fu, H. Zeng and G.-q. Zheng 74
- Altered expression of long noncoding RNAs in patients with major depressive disorder**
T. Seki, H. Yamagata, S. Uchida, C. Chen, A. Kobayashi, M. Kobayashi, K. Harada, K. Matsuo, Y. Watanabe and S. Nakagawa 92
- Distinguishing suicide ideation from suicide attempts: Further test of the Integrated Motivational-Volitional Model of Suicidal Behaviour**
D. Branley-Bell, D.B. O'Connor, J.A. Green, E. Ferguson, R.E. O'Carroll and R.C. O'Connor 100
- Ketamine induced changes in regional cerebral blood flow, interregional connectivity patterns, and glutamate metabolism**
J.E. Bryant, M. Frölich, S. Tran, M.A. Reid, A.C. Lahti and N.V. Kraguljac 108
- Risk of pneumonia associated with atypical antipsychotic use in nursing home residents with Parkinson's disease**
F. Chekani, H.M. Holmes, M.L. Johnson, H. Chen, J.T. Sherer and R.R. Aparasu 116
- Can psychomotor disturbance predict ect outcome in depression?**
L. van Diermen, S. Vanmarcke, S. Walther, H. Moens, E. Veltman, E. Fransen, B. Sabbe, R. van der Mast, T. Birkenhäger and D. Schrijvers 122
- Ketamine metabolite pilot study in a suicidal depression trial**
M.F. Grunebaum, H.C. Galfalvy, T.-H. Choo, M.S. Parris, A.K. Burke, R.F. Suckow, T.B. Cooper and J.J. Mann 129
- Thalamic volume, resting-state activity, and their association with the efficacy of electroconvulsive therapy**
A. Takamiya, T. Kishimoto, K.-c. Liang, Y. Terasawa, S. Nishikata, R. Tanumi, K. Sawada, S. Kurokawa, J. Hirano, B. Yamagata and M. Mimura 135
- Metabolic syndrome is negatively associated with cognition among endothelial nitric oxide synthase (eNOS)-786C carriers in schizophrenia-spectrum disorders**
A.Z. Kraal, A.C. Moll, N.R. Arvanitis, K.M. Ward, R.J. Dougherty, T.B. Grove, K.J. Burghardt and V.L. Ellingrod 142
- Letter to the editor: Are thyroid function abnormalities only related to antipsychotic treatment in patients with severe mental disorders?**
R.B. Khalil and S. Richa 148
- Response: Are thyroid abnormalities only related to antipsychotic treatment in patients with severe mental disorders?**
T.S. Jahr Vedal, N.E. Steen, K.I. Birkeland, I. Dieset, E.J. Reponen, J.F. Laskemoen, L. Rødevand, I Melle, O.A. Andreassen, E. Molden and E.G. Jönsson 150
- Adequate evidence to support improved outcomes in depression by primary care physicians compared to psychiatrists when using combinatorial pharmacogenomics**
J.-A. Tanner, P.E. Davies, N.C. Voudouris, B.M. Dechairo and J.L. Kennedy 151

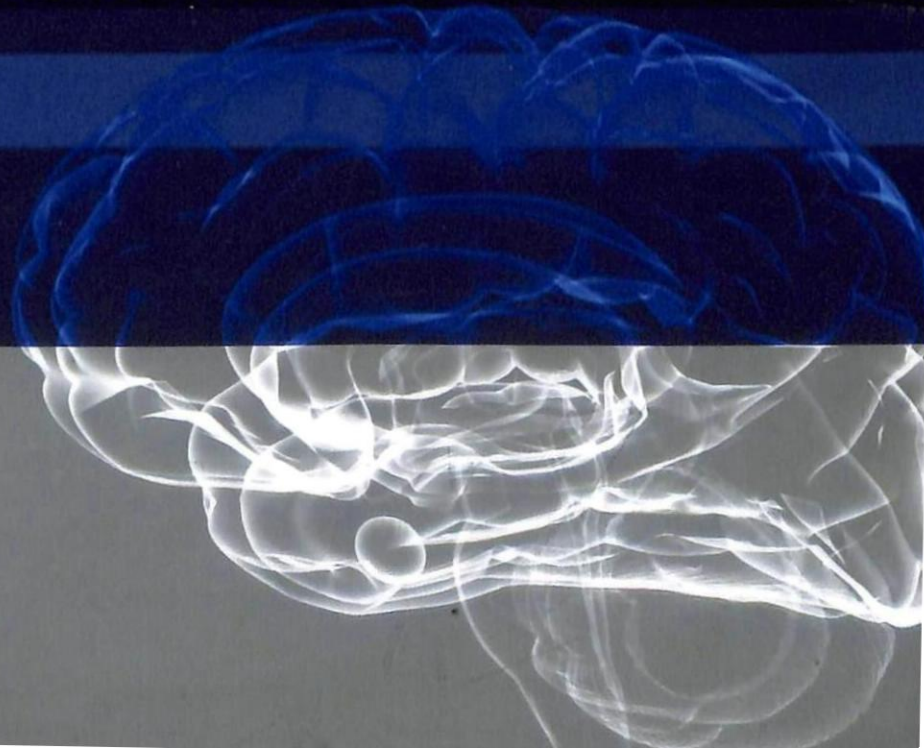


Volume 118, November 2019 ISSN 0022-3956

JOURNAL OF
**psychiatric
research**



FLORIAN HOLSBOER
Max Planck Institute of Psychiatry, Munich, Germany
ALAN F. SCHATZBERG
Stanford University School of Medicine, Stanford, USA



JOURNAL OF psychiatric research

Website: <http://www.elsevier.com/locate/jpsychires/>

Volume 118 November 2019

Contents

Higher prevalence of irritable bowel syndrome and greater gastrointestinal symptoms in obsessive-compulsive disorder

J. Turna, K. Grosman Kaplan, B. Patterson, P. Bercik, R. Anglin, N. Soreni and M. Van Ameringen

Corrigendum to "The generational gap: Mental disorder prevalence and disability amongst first and second generation immigrants in Australia" [J. Psychiatr Res. 83 (2016):103–111]

B.J. Liddell, A. Nickerson, L. Sartor, L. Ivancic and R.A. Bryant

Corrigendum to "The dimensional structure of psychopathology in 22q11.2 Deletion Syndrome" [J. Psychiatr. Res. 92 (2017) 124–131]

M. Niarchou, T.M. Moore, S.X. Tang, M.E. Calkins, D.M. McDonald-McGuinn, E.H. Zackai, B.S. Emanuel, R.C. Gur and R.E. Gur

A polygenic score for body mass index is associated with depressive symptoms via early life stress: Evidence for gene-environment correlation

R. Avinun and A.R. Hariri

9

1 Treatment for Gulf War Illness (GWI) with KPAX002 (methylphenidate hydrochloride + GWI nutrient formula) in subjects meeting the Kansas case definition: A prospective, open-label trial

M. Holodniy and J.D. Kaiser

14

7 Comparative efficacy and acceptability of first-line drugs for the acute treatment of generalized anxiety disorder in adults: A network meta-analysis

H. He, Y. Xiang, F. Gao, L. Bai, F. Gao, Y. Fan, J. Lyu and X. Ma

21

Effect of drug compliance on health care costs in newly-diagnosed dementia: Analysis of nationwide population-based data

8 S.-T. Oh, K.-T. Han, W.-J. Choi and J. Park

31

Continued on inside back cover

Abstracted/Indexed in:

Biosis Data., Chemical Abstracts Service, Curr. Cont. SOC & Beh. Sci., Thomson Scientific/BIOMED Database, EMBASE LLBA, MEDLINE, Psychol. Abstr., Psych-INFO, PsychLITCD-ROM, Res. Alert, Curr. Cont. Sci. Cit. Ind., Curr. Cont. Clin. Med., Curr. Cont. Life Sci., Curr. Cont. SCISEARCH Data., Curr. Cont. SOC. Sci. Cit. Ind. Med. Also covered in the abstract and citation database Scopus®. Full text available on ScienceDirect®.

Printed by Henry Ling Ltd, The Dorset Press, Dorchester, UK



Available online at www.sciencedirect.com

ScienceDirect



0022-3956(201911)118:C;1-J

Psychiatric comorbidity in Intermittent Explosive Disorder

E.F. Coccaro

38

mRNA and miRNA profiles in the nucleus accumbens are related to fear memory and anxiety induced by physical or psychological stress

K. Du, W. Lu, Y. Sun, J. Feng and J.-H. Wang

44

Randomized controlled trial of adjunctive Valproate for cognitive remediation in early course schizophrenia

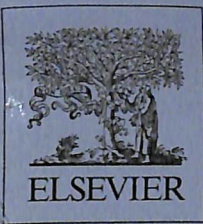
I. Ibrahim, S. Tobar, W. Fathi, H. ElSayed, A. Yassein, A. Eissa, E. Elsheshtawy, H. Elboraei, M. Shahda, M. Elwasify, A. Ibrahim, K. Chen, J. Wood, F. Dickerson, R.H. Yölken, F. El Chennawi, R. Gur, R. Gur, W. El Bahaey, V. Nimgaonkar and H. Mansour

66

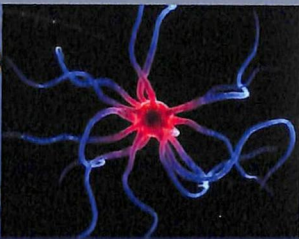
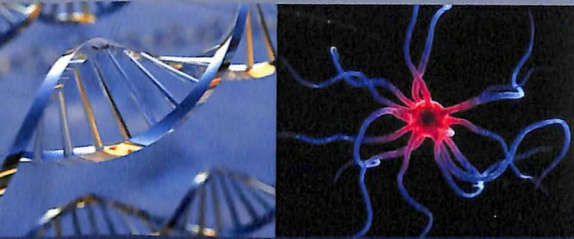
Pharmacological and psychological interventions for generalized anxiety disorder in adults: A network meta-analysis

T.-R. Chen, H.-C. Huang, J.-H. Hsu, W.-C. Ouyang and K.-C. Lin

73



JOURNAL OF
**psychiatric
research**

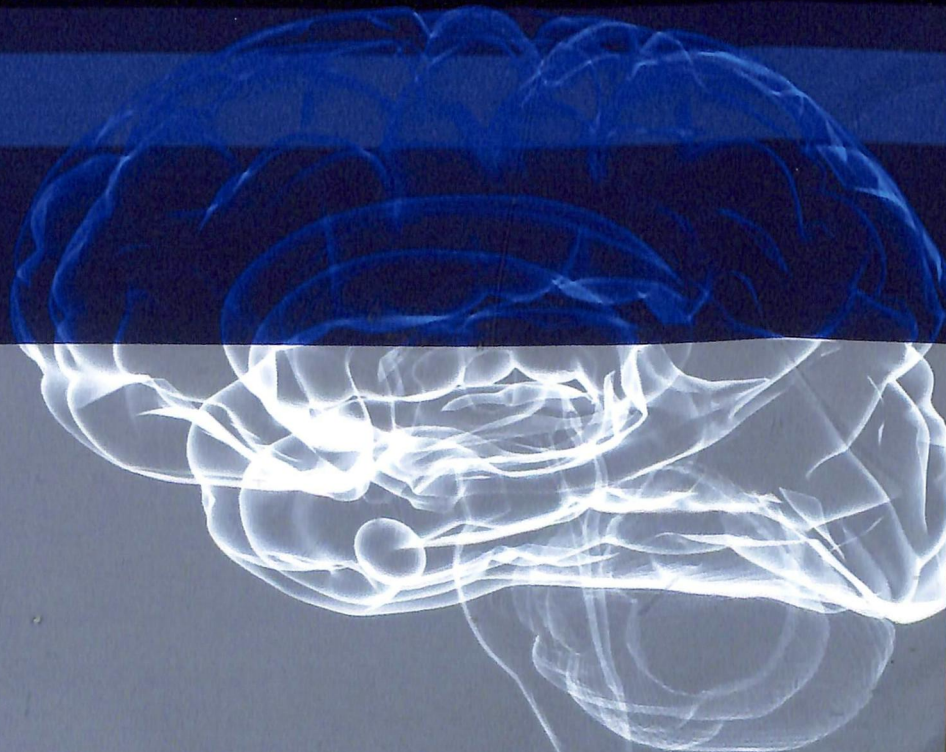


FLORIAN HOLSBOER

Max Planck Institute of Psychiatry, Munich, Germany

ALAN F. SCHATZBERG

Stanford University School of Medicine, Stanford, USA



JOURNAL OF psychiatric research

Website: <http://www.elsevier.com/locate/jpsychires/>

Volume 119 December 2019

Contents

Differences in adverse childhood experiences (ACEs) and quality of physical and mental health between transgender and cisgender sexual minorities

P.W. Schnarrs, A.L. Stone, R. Salcido Jr., A. Baldwin, C. Georgiou and C.B. Nemeroff

The impact of startle reactivity to unpredictable threat on the relation between bullying victimization and internalizing psychopathology

M. Radoman, F.D. Akinbo, K.M. Rospenda and S.M. Gorka

Modeling psychiatric comorbid symptoms of epileptic seizures in zebrafish

J. Canzian, T.E. Müller, F. Francescon, P. Michelotti, B.D. Fontana, F.V. Costa and D.B. Rosemberg

Posttraumatic stress symptom courses in U.S. military veterans: A seven-year, nationally representative, prospective cohort study

N.P. Mota, J.M. Cook, N.B. Smith, J. Tsai, I. Harpaz-Rotem, J.H. Krystal, S.M. Southwick and R.H. Pietrzak

Corrigendum to "Ketamine metabolite pilot study in a suicidal depression trial" [J Psychiatr Res 117 (2019) 129-134. doi: 10.1016/j.jpsychires.2019.08.005. Epub 2019 Aug 9]

1 *M.F. Grunebaum, H.C. Galfalvy, T.-H. Choo, M.S. Parris, A.K. Burke, R.F. Suckow, T.B. Cooper and J.J. Mann*

Towards precision medicine in generalized anxiety disorder: Review of genetics and pharmaco(epi)genetics

7 *J. Tomasi, A.J. Lisoway, C.C. Zai, R. Harripaul, D.J. Müller, G.C.M. Zai, R.E. McCabe, M.A. Richter, J.L. Kennedy and A.K. Tiwari*

Racial and ethnic differences in individual-level and area-based socioeconomic status and 12-month DSM-IV mental disorders

14 *R. Chen, R. C. Kessler, E. Sadikova, A. NeMoyer, N.A. Sampson, K. Alvarez, C.L. Vilsaint, J.G. Green, K.A. McLaughlin, J.S. Jackson, M. Alegria and D.R. Williams*

32

33

48

Continued on inside back cover

Abstracted/Indexed in:

Biosis Data., Chemical Abstracts Service, Curr. Cont. SOC & Beh. Sci., Thomson Scientific/BIOMED Database, EMBASE LLBA, MEDLINE, Psychol. Abstr., Psych-INFO, PsychLITCD-ROM, Res. Alert, Curr. Cont. Sci. Cit. Ind., Curr. Cont. Clin. Med., Curr. Cont. Life Sci., Curr. Cont. SCISEARCH Data., Curr. Cont. SOC. Sci. Cit. Ind. Med. Also covered in the abstract and citation database Scopus®. Full text available on ScienceDirect®.

Printed by Henry Ling Ltd, The Dorset Press, Dorchester, UK



ELSEVIER

Available online at www.sciencedirect.com

ScienceDirect



0022-3956(201912)119:C;1-H



Polygenic risk for psychiatric disorder and singleness in patients with severe mental illness and controls

C. Hjorthøj, M.J. Uddin, D.M. Hougaard, H.J. Sørensen and M. Nordentoft

60

Peripheral biomarkers allow differential diagnosis between schizophrenia and bipolar disorder

L. Tasic, A.L.T. Larcerda, J.G.M. Pontes, T.B.B.C. da Costa, J.V. Nani, L.G. Martins, L.A. Santos, M.F.Q. Nunes, M.P.M. Adelino, M. Pedrini, Q. Cordeiro, F. Bachion de Santana, R.J. Poppi, E. Brietzke and M.A.F. Hayashi

67

Effects of lithium and valproate on behavioral parameters and neurotrophic factor levels in an animal model of mania induced by paradoxical sleep deprivation

G.C. Dal-Pont, M. T.S. Jório, W.R. Resende, F.F. Gava, J.M. Aguiar-Geraldo, T. Possamai-Della, J. Peper-Nascimento, J. Quevedo and S.S. Valvassori

76

The effect of melatonin on depressive symptoms and anxiety in patients after acute coronary syndrome: The MEDACIS randomized clinical trial

M. T. Madsen, J.A. Zahid, C.H. Hansen, O. Grummedal, J.R. Hansen, A. Isbrand, U.O. Andersen, L.J. Andersen, M. Taskiran, E. Simonsen and I. Gögenur

84

No pills, more skills: The adverse effect of hormonal contraceptive use on exposure therapy benefit

F. Raeder, F. Heidemann, M. Schedlowski, J. Margraf and A. Zlomuzica

95

Increased ileal bile acid binding protein and galectin-9 are associated with mild cognitive impairment and Alzheimer's disease

X. Wang, Y. Niu, C.-x. Yue, S. Fu and R.-t. Wang

102

Long-term effects of parental divorce on mental health – A meta-analysis

F. Auersperg, T. Vlasak, I. Ponocny and A. Barth

107

Ligands and receptors of the TNF superfamily are decreased in major depression and during early antidepressant therapy

F.M. Schmidt, J. Koch, C. Nowak, L.M. Holdt, D. Teupser, U. Hegerl and H. Himmerich

116